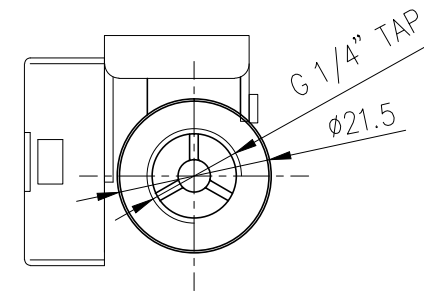
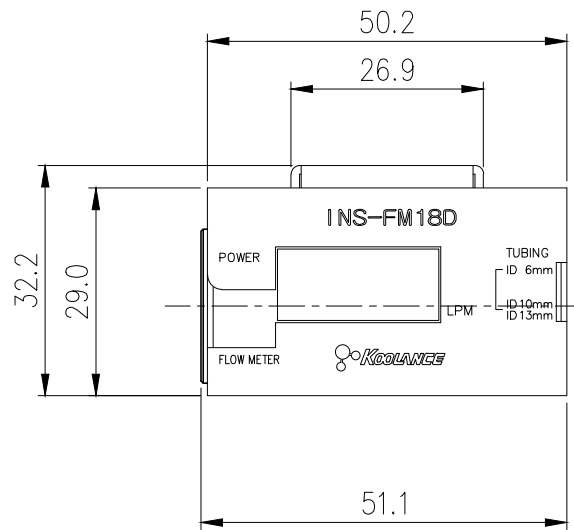
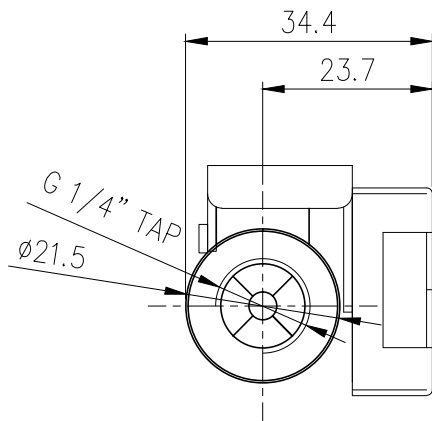
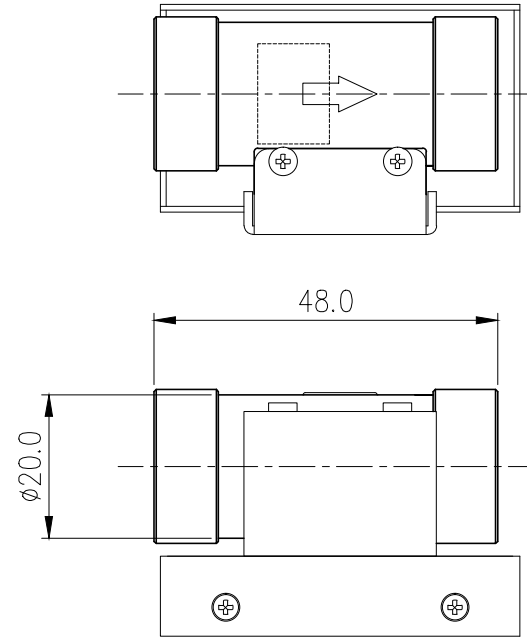


INS-FM18D Coolant Flow Meter with Display



INS-FM18D combines an LCD display with Koolance's stainless steel flow meter in a small footprint. The display shows flow rate in liters per minute (LPM) only. A 12VDC connection is required for power. Primary materials are a stainless steel body with nickel-plated brass G 1/4 BSPP threads.

Flow Meters	
Accuracy (Approx.)	+/-5%
Flow Rate Range	2.0-15 LPM (32-240 GPH)
General	
Weight	0.28 lb (0.13 kg)
Fitting Thread	G 1/4 BSPP
Materials	Nickel-Plated Brass, Brass, PMMA Acrylic, Stainless Steel, POM Acetal, Plastic, SmCo5
Max Pressure @ 25°C	10kgf/cm2 (142.2psi)
Max Temperature	100°C (212°F)
Min Temperature	0°C (32°F)



NO.	DESCRIPTION	MATER'L	QUANTITY	REMARKS
	<b>Koolance</b>	UNIT	MM	PART NO. INS-FM18D
		SCALE	N/S	TITLE
	BY	BY	BY	BY
				3RD ANGLE
DATE	S.J.LEE			DWG. NO.
				ITEM