

INS-FM18 Coolant Flow Meter, Stainless Steel



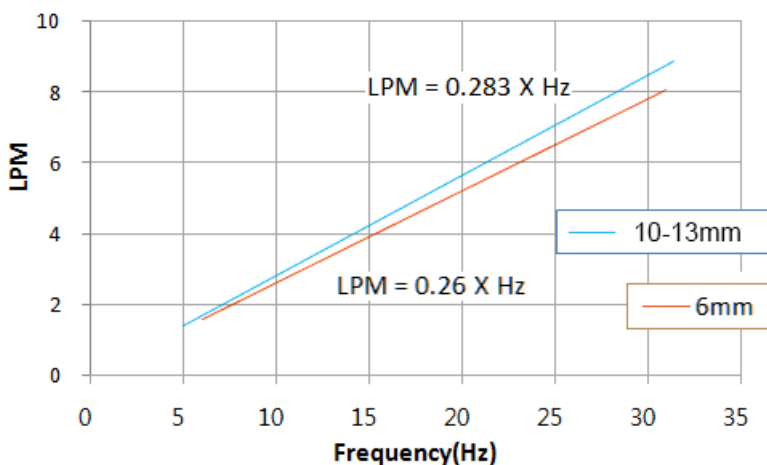
Koolance's stainless steel and brass inline flow meter provides electronic indication of real-time coolant flow rate. Uses G 1/4 BSPP threads.

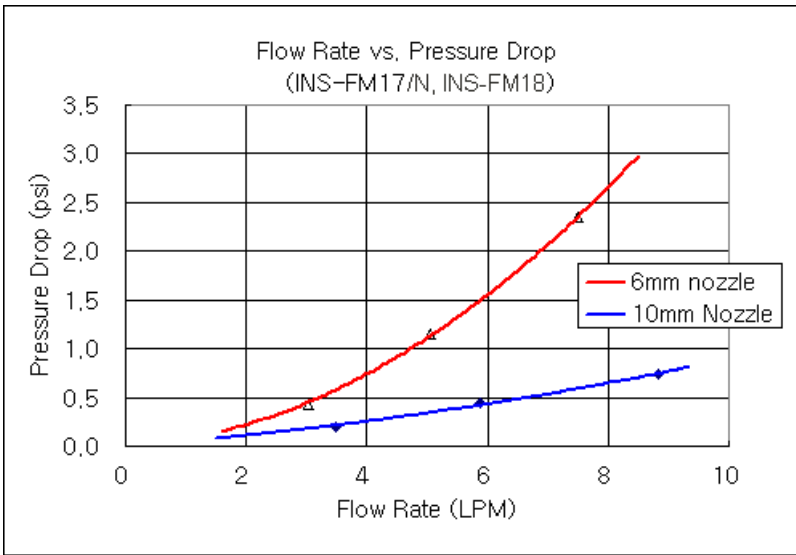
A frequency circuit (sold [separately](#)) multiplies the RPM signal to allow it to be read by most fan tachometer headers (such as those found on ATX motherboards). This signal is intended to allow fan detection software (including BIOS) to enable the appropriate alarm or shutdown procedure if the flow meter impeller stops rotating. The "RPMs" represent approximate flow meter coolant in mL/min, and not revolutions.

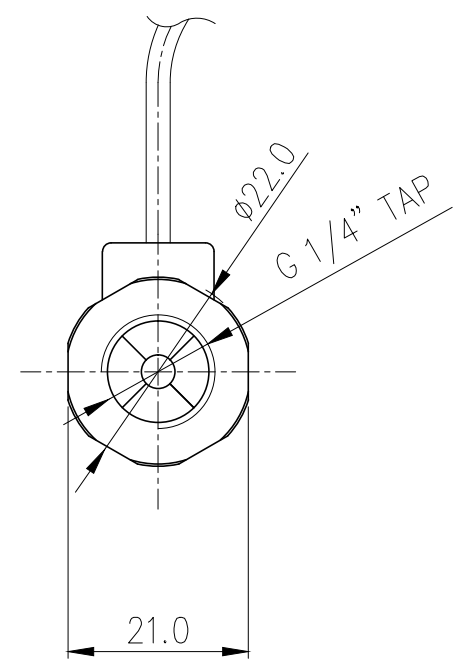
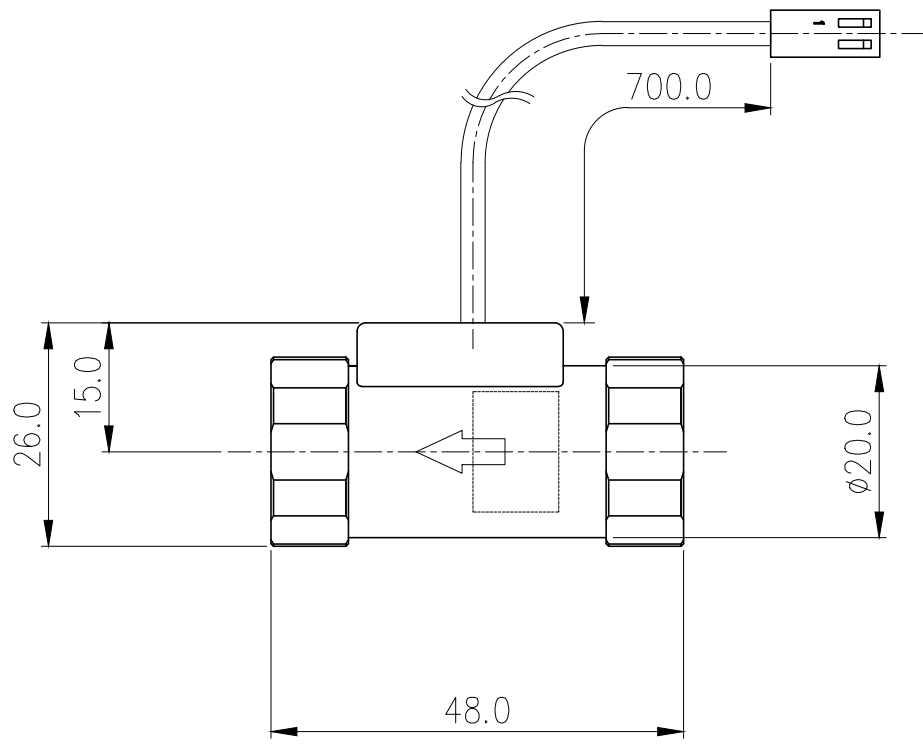
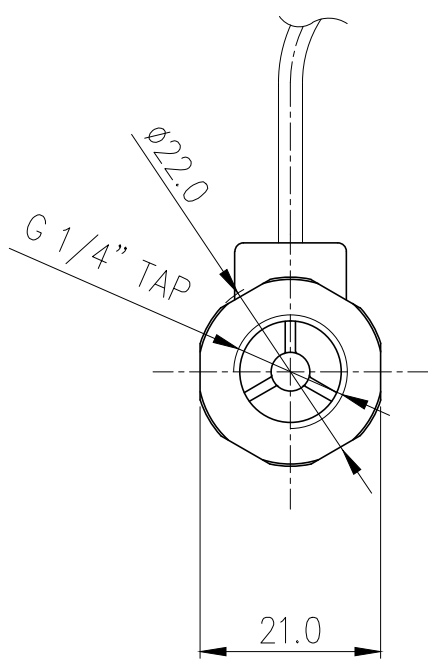
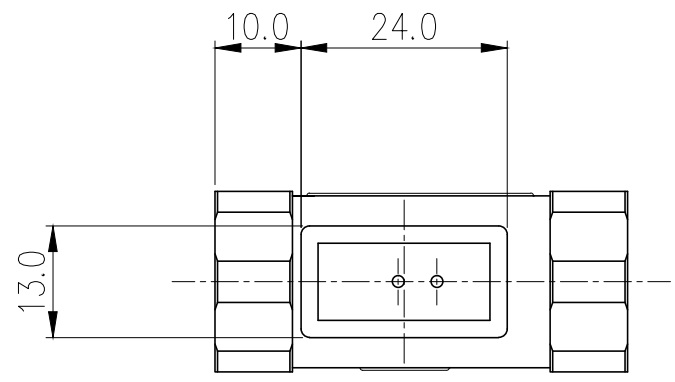
Wire length is approximately 28" (70cm). Primary materials are a stainless steel body with nickel-plated brass threads.

Flow Meters	
Accuracy (Approx.)	+/-5%
Flow Rate Range	2.0-15 LPM (32-240 GPH)
General	
Weight	0.18 lb (0.08 kg)
Fitting Thread	G 1/4 BSPP
Materials	Nickel-Plated Brass, Brass, PMMA Acrylic, Stainless Steel, POM Acetal, Plastic, SmCo5
Max Pressure @ 25°C	10kgf/cm2 (142.2psi)
Max Temperature	100°C (212°F)
Min Temperature	0°C (32°F)

Flow Rate vs. Pulse Frequency







NO.	DESCRIPTION	MATER'L	QUANTITY	REMARKS
	KOOLANCE	UNIT	MM	APPAR INS-FM18
		SCALE	N/S	TITLE
			3RD ANGLE	Ass'y
DATE	BY	BY	APPRO BY	CODE NO.
04/12/2017	S.J.LEE			DWG. NO.