



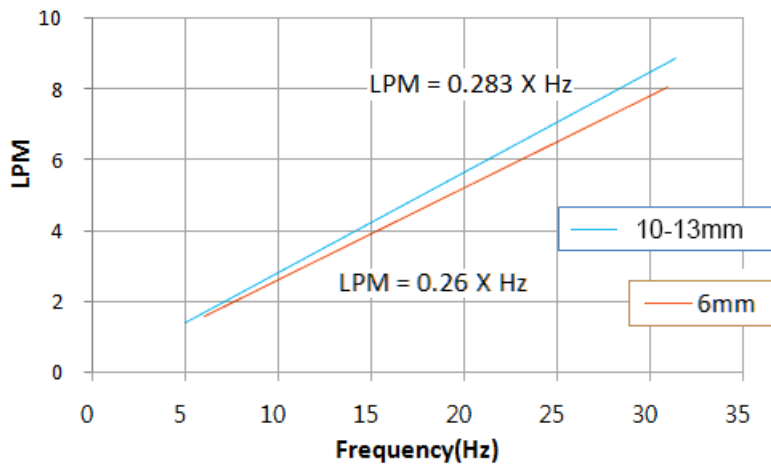
Koolance's stainless steel and brass inline flow meter provides electronic indication of real-time coolant flow rate. This model also integrates a coolant thermistor temperature sensor, which can be interpreted with a separate Koolance product such as [CTR-CD1224](#) or 10K-ohm compatible cooling system. SEN-FM18T10 uses G 1/4 BSPP threads for fittings.

A frequency circuit (sold [separately](#) ) multiplies the RPM signal to allow it to be read by most fan tachometer headers, such as those found on ATX motherboards. This signal is intended to allow fan detection software to enable the appropriate alarm or shutdown procedure if the flow meter impeller stops rotating. The "RPMs" represent approximate flow meter coolant in mL/min, and not revolutions.

Flow rate range = 2.0-15 LPM (32-240 GPH). Fluid temperature range = 0 - 70°C (32-158°F). Maximum pressure = 6kgf/cm2 (85 psi). Wire length is about 28" (70cm), with product dimensions of approximately 1" x 1.9" x 0.75" (2.5cm x 4.8cm x 1.9cm). Primary materials are a stainless steel body with nickel-plated brass threads.

Flow Meters	
Accuracy (Approx.)	+/-5%
Flow Rate Range	2.0-15 LPM (32-240 GPH)
General	
Weight	0.22 lb (0.10 kg)
Fitting Thread	G 1/4 BSPP
Materials	Nickel-Plated Brass, Brass, PMMA Acrylic, Stainless Steel, POM Acetal, Plastic, SmCo5
Max Pressure @ 25°C	6kgf/cm2 (85 psi)
Max Temperature	70°C (158°F)
Min Temperature	0°C (32°F)

Flow Rate vs. Pulse Frequency



Flow Rate vs. Pressure Drop  
(INS-FM17/N, INS-FM18)

