

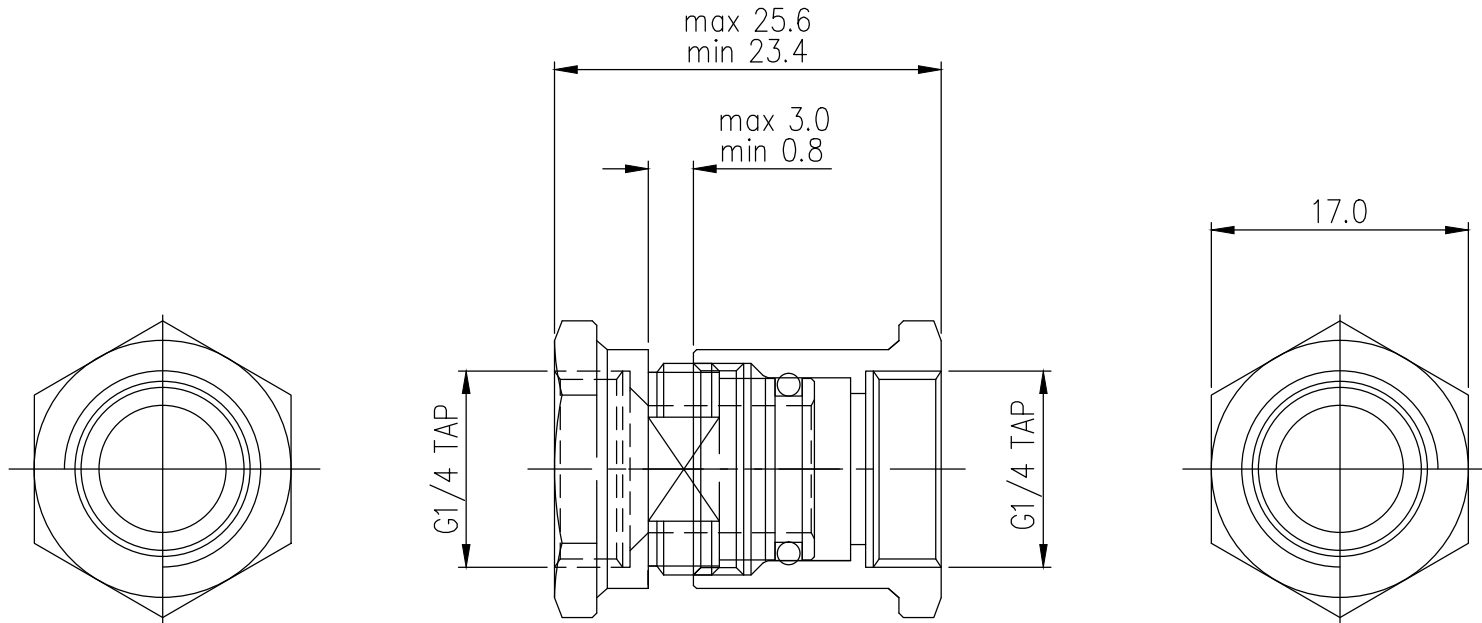
## Computer L-Bracket with G 1/4 BSPP Threads




Dual panel-mounted socket threads for "internal/external" fittings on a computer chassis L-bracket. This also allows tubing sizes which are too large to fit through the chassis slot. Nickel-plated brass fittings with G 1/4 BSPP threads. This product may need to be temporarily disassembled during installation.

General	
Weight	0.10 lb (0.05 kg)





REV	DATE	CONTENTS	APPD BY

NO.		DESCRIPTION			MATER'L		QUANTITY	REMARKS
					UNIT	MM	PART NO. BKT-PCI-G	
					SCALE	N/S	TITLE	
DATE	BY	BY	BY	APPRO BY	3RD ANGLE			
	song				CODE NO.		ITEM	PAGE