

P/N: ADT-N12F-G38M

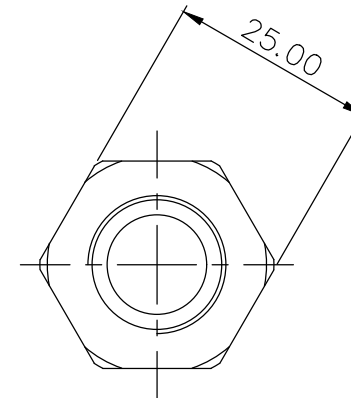
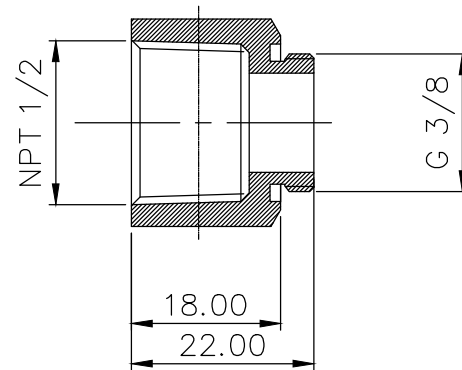
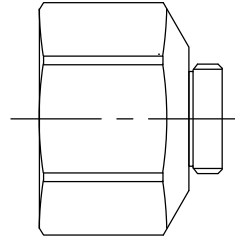
Threading Adapter, NPT 1/2 Female to G 3/8


Male



Single fitting threading adapter, from NPT 1/2 (female) to G 3/8 BSPP (male).

General	
Weight	0.11 lb (0.05 kg)
Fitting Thread	NPT 1/2, G 3/8 BSPP
Materials	Brass, Nickel Plating
Max Pressure @ 25°C	15kgf/cm2 (213.4psi)
Max Temperature	120°C (248°F)



NO.	DESCRIPTION				MATER'L		QUANTITY	REMARKS
					UNIT	MM	PART NO. ADT-N12F-G38M	
					SCALE	N/S	TITLE	
	DATE	BY	BY	APPROD BY	3RD ANGLE		F-M Type (NPT1/2-G3/8)	
		ys.shin			DWG. NO.		ITEM	