

Y719

NEW

+200°
-40°

C40

Aisi
303

RoHS
COMPLIANT

STEEL ANGLED BALL JOINT WITH SAFETY CATCH - DIN 71802 - CS DESIGN

Materials:

Y719:
Steel with strength class 5.8.
Y719CIN:
Stainless steel (Aisi 303).

Surface finish:

Turned with low roughness.

Colour:

Y719:
Standard blue galvanising.
Y719CIN:
Natural.

Inserts:

(2) Ball insert with milled seat for wrench and threaded stud machined from solid material (thread tolerance 6g).
Y719: steel - Y719CIN: stainless steel (Aisi 303).
(3) Harmonic steel spring ring.
(4) Nut with threaded hole (DIN 934).
Y719: steel - Y719CIN: stainless steel (Aisi 304).
(5) Safety catch to retain the ball with a shaped spring. (Y719: harmonic steel) (Y719CIN: natural stainless steel).
(1) Ball joint with threaded hole and hole for safety spring.
Y719: steel - Y719CIN: stainless steel (Aisi 303).

Standard version:

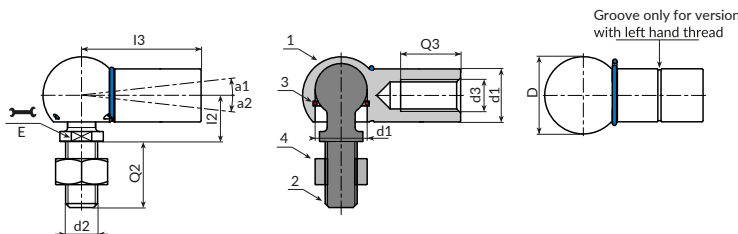
Right-hand thread (thread tolerance 6H).

Version SX (LH):

Left-hand thread (thread tolerance 6H). Identifiable by the groove on the joint.

Special requests:

- None.



Version 719 - joint with standard thread

Stock availability as % (🛒)
90% (●) - 40% (●) - 5% (●)

🛒	Art.	d2 _{6g}	d3 _{6H}	D	E	l2	l3	Q2	d1 _{h9-H9}	Q3	a1	a2	g
●	Y71908.VZM05	M5	M5	12,8	7	9	22	10,2	8	10,2	18	10	15
●	Y71910.VZM06	M6	M6	14,8	8	11	25	11,5	10	11,5	18	15	25
●	Y71913.VZM08	M8	M8	19,3	11	13	30	14	13	14	18	15	53
●	Y71916.VZM10	M10	M10	24	13	16	35	15,5	16	15,5	18	15	104
●	Y71919.VZM14X1.5	M14X1,5	M14X1,5	30	16	20	45	21,5	19	21,5	18	15	221

Version 719 - joint with LH thread

🛒	Art.	d2 _{6g}	d3 _{6H}	D	E	l2	l3	Q2	d1 _{h9-H9}	Q3	a1	a2	g
●	Y71908.VZM05SX	M5	M5 SX	12,8	7	9	22	10,2	8	10,2	18	10	15
●	Y71910.VZM06SX	M6	M6 SX	14,8	8	11	25	11,5	10	11,5	18	15	25
●	Y71913.VZM08SX	M8	M8 SX	19,3	11	13	30	14	13	14	18	15	53
●	Y71916.VZM10SX	M10	M10 SX	24	13	16	35	15,5	16	15,5	18	15	104
●	Y71919.VZM14X1.5SX	M14X1,5	M14X1,5 SX	30	16	20	45	21,5	19	21,5	18	15	221

Version 719CIN - joint with standard thread - STAINLESS STEEL

INOX

🛒	Art.	d2 _{6g}	d3 _{6H}	D	E	l2	l3	Q2	d1 _{h9-H9}	Q3	a1	a2	g
●	Y71908.INM05CIN	M5	M5	12,8	7	9	22	10,2	8	10,2	18	10	15
●	Y71910.INM06CIN	M6	M6	14,8	8	11	25	11,5	10	11,5	18	15	25
●	Y71913.INM08CIN	M8	M8	19,3	11	13	30	14	13	14	18	15	53
●	Y71916.INM10CIN	M10	M10	24	13	16	35	15,5	16	15,5	18	15	104
●	Y71919.INM14X1.5CIN	M14X1,5	M14X1,5	30	16	20	45	21,5	19	21,5	18	15	221

Version 719CIN - joint with LH thread - STAINLESS STEEL

INOX

🛒	Art.	d2 _{6g}	d3 _{6H}	D	E	l2	l3	Q2	d1 _{h9-H9}	Q3	a1	a2	g
●	Y71908.INM05XCIN	M5	M5 SX	12,8	7	9	22	10,2	8	10,2	18	10	15
●	Y71910.INM06XCIN	M6	M6 SX	14,8	8	11	25	11,5	10	11,5	18	15	25
●	Y71913.INM08XCIN	M8	M8 SX	19,3	11	13	30	14	13	14	18	15	53
●	Y71916.INM10XCIN	M10	M10 SX	24	13	16	35	15,5	16	15,5	18	15	104
●	Y71919.INM14X1.5XCIN	M14X1,5	M14X1,5 SX	30	16	20	45	21,5	19	21,5	18	15	221



Arbel Agencies LTD.

11 Ba'alei Hamelacha st. Qiryat Bialik P.O.B 1095, ZIP 2751311, ISRAEL
+972(0)48736969 ☎ +972(0)48730708 📠 info@arbel-ltd.com 📧 www.arbel-ltd.com 🌐

