

Y336

DIN 6336 - E DESIGN - ALUMINIUM STAR HANDWHEEL



Materials:
Aluminium alloy.

Surface finish:
Smooth, turned.

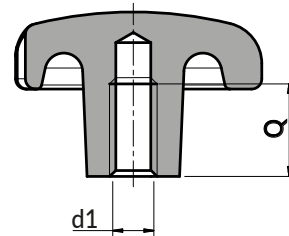
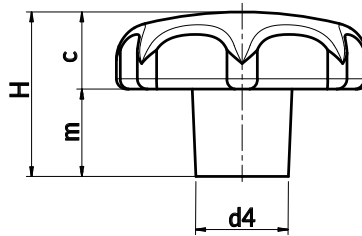
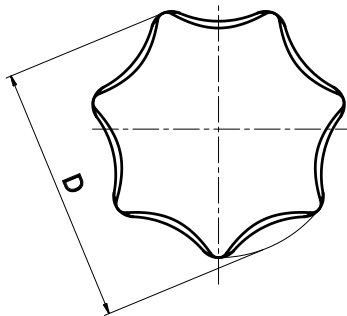
Y336:
Tumbled then electrolytically finished surface.

Y336L:
Mirror polished surface finish.

Colour:
Natural.

Hole:
Female threaded hole (thread tolerance 6H).

Special requests:
• None.



Version Y336: Tumbled surface finish

Stock availability as % (🛒)
90% (●) - 40% (●) - 5% (●)

Art.	D	d	H	m	c	d1 _{6H}	Q	g
Y336040.AM08	40	14	25	13	12	M8	15	35
Y336050.AM08	50	18	32	17	15	M8	18	55
Y336050.AM10	50	18	32	17	15	M10	18	54
Y336063.AM10	63	20	40	21	19	M10	22	110
Y336063.AM12	63	20	40	21	19	M12	22	107
Y336080.AM12	80	25	50	25	25	M12	28	320
Y336080.AM16	80	25	50	25	25	M16	28	300

Version Y336 L: Mirror polished surface finish

Art.	D	d	H	m	c	d1 _{6H}	Q	g
Y336040.AM08L	40	14	25	13	12	M8	15	35
Y336050.AM08L	50	18	32	17	15	M8	18	55
Y336050.AM10L	50	18	32	17	15	M10	18	54
Y336063.AM10L	63	20	40	21	19	M10	22	110
Y336063.AM12L	63	20	40	21	19	M12	22	107
Y336080.AM12L	80	25	50	25	25	M12	28	320
Y336080.AM16L	80	25	50	25	25	M16	28	300