

W851



THREADED STEEL GRUB SCREW WITH HEAGON SOCKET END AND FLATTENED BALL POINT

Materials:

W851:

Quenched steel grub screw body with strength class 10.9.

W851CIN:

Stainless steel grub screw body (Aisi 303).

Surface finish:

Smooth.

Surface finish:

W851:

Black-oxide treated.

W851CIN:

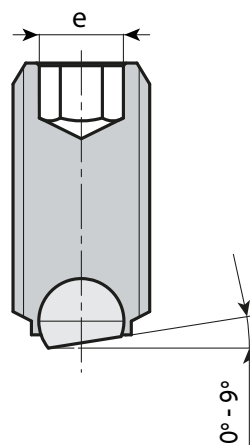
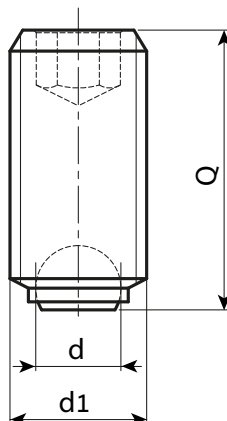
Natural.

Ball:

Flattened hardened stainless steel ball (Aisi 420). Optimal angle adjustment between 0° and 9°. The ball is not fixed, it can rotate.

Special requests:

- None.



W.P



Version W851: black-oxide treated steel

Stock availability as % (🛒)
90% (●) - 40% (●) - 5% (●)

art.	d1 _{6g}	e	d	Q	g
W851.SBM04X..	M4	2	2.5	06-08-10-12-16	0,5-0,5-0,7-0,9-1
W851.SBM05X..	M5	2.5	3	07,5-09,5-11,5-15,5-19,5-24,5	1-1-1,5-1,5-2,5-3
W851.SBM06X..	M6	3	4	10-12-16-20-25	1,5-1,8-2,5-3-4
W851.SBM08X..	M8	4	5.5	10-12-16-20-25-30	2,5-3,5-4-5-7,5-9
W851.SBM10X..	M10	5	7	12-16-20-25-35	5-7-9-11-16
W851.SBM12X..	M12	6	8.5	16-20-30-40	10-12,5-20-28,5
W851.SBM16X..	M16	8	12	20-25-35-50	22-28-41-48
W851.SBM20X..	M20	10	15	30-40-60	54-74-120

Enter the selected grub screw length in place of the two dots .. in the item code.



Version W851CIN - stainless steel (Aisi 303)

art.	d1 _{6g}	e	d	Q	g
W851.INM04X..CIN	M4	2	2.5	06-08-10-12-16	0,5-0,5-0,7-0,9-1
W851.INM05X..CIN	M5	2.5	3	07,5-09,5-11,5-15,5-19,5-24,5	1-1-1,5-1,5-2,5-3
W851.INM06X..CIN	M6	3	4	10-12-16-20-25	1,5-1,8-2,5-3-4
W851.INM08X..CIN	M8	4	5.5	10-12-16-20-25-30	2,5-3,5-4-5-7,5-9
W851.INM10X..CIN	M10	5	7	12-16-20-25-35	5-7-9-11-16
W851.INM12X..CIN	M12	6	8.5	16-20-30-40	10-12,5-20-28,5

Enter the selected grub screw length in place of the two dots .. in the item code.



Arbel Agencies LTD.

11 Ba'alei Hamelacha st. Qiryat Bialik P.O.B 1095, ZIP 2751311, ISRAEL
+972(0)48736969 ☎ +972(0)48730708 📠 info@arbel-ltd.com 📧 www.arbel-ltd.com 🌐

