

W503



METAL FIXED LEVER WITH HORIZONTAL HANDLE AND SMOOTH HOLE

Materials:

W503:

Steel with strength class 5.8.

W503CIN:

Stainless steel (Aisi 303).

Surface finish:

Turned with low roughness.

Colour:

W503:

Nickel plated (galvanic treatment).

W503CIN:

Natural.

Alternative finishes:

Black-oxide treatment:

(replace the final letter of the code (H) with letter B (W503070.SM0801B).

Galvanising:

(replace the final letter of the code (H) with letter Z (W503070.SM0801Z).

Handgrip:

Conical knob I500 in reinforced PA6 in black (Ral 9011) [see page].

Handgrip fixing method:

Push-fit, removable.

Hole:

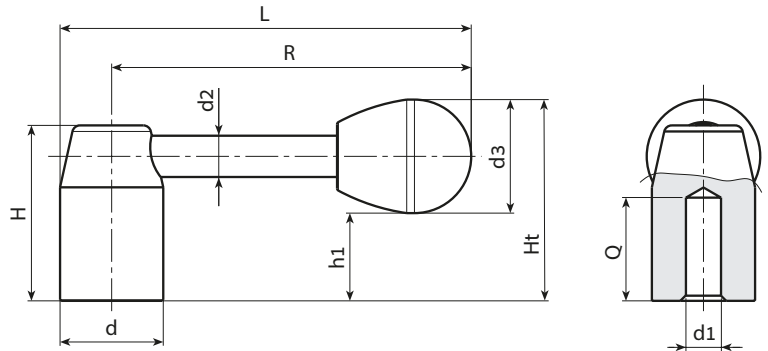
Blind smooth bore machined from solid metal (bore tolerance H10).

Fixing method:

For fixing systems, or execution of keyways or square holes, please refer to the technical notes attached to the catalogue.

Special requests:

- Upon request and for special quantities levers can be supplied with custom hole diameter d1.
- Upon request and for special quantities handgrip available in the colours indicated in the chart [page].



Version W503 - nickel-plated steel

Stock availability as % (🛒)
90% (●) - 40% (●) - 5% (●)

🛒	art.	d	R	L	H	Ht	h1	d2	d3	d1 _{H10}	Q	g
●	W503070.SD0801H	20	70	80	34	39	17	8	22	8	16	84
●	W503080.SD1001H	22	80	91	38	43	21	8	22	10	18	109
●	W503095.SD1201H	24	95	107	42	49	21	10	28	12	20	158
●	W503110.SD1201H	28	110	124	48	54	26	12	28	12	22	278
●	W503125.SD1601H	32	125	141	52	59	27	12	32	16	25	337
●	W503140.SD1601H	36	140	158	58	64	32	14	32	16	26	500
●	W503150.SD2001H	40	150	170	64	71	34	16	37	20	28	670
●	W503170.SD2001H	45	170	192.5	70	77	40	16	37	20	30	870

Version W503CIN - stainless steel (Aisi 303)



🛒	art.	d	R	L	H	Ht	h1	d2	d3	d1 _{H10}	Q	g
●	W503070.ID0801CIN	20	70	80	34	39	17	8	22	8	16	84
●	W503080.ID1001CIN	22	80	91	38	43	21	8	22	10	18	109
●	W503095.ID1201CIN	24	95	107	42	49	21	10	28	12	20	158
●	W503110.ID1201CIN	28	110	124	48	54	26	12	28	12	22	278
●	W503125.ID1601CIN	32	125	141	52	59	27	12	32	16	22	337
●	W503140.ID1601CIN	36	140	158	58	64	32	14	32	16	23	500
●	W503150.ID2001CIN	40	150	170	64	71	34	16	37	20	25	670

