

W501



C40

Aisi
303

UL94
HB



METAL FIXED LEVER WITH HORIZONTAL HANDLE AND THREADED HOLE

Materials:

W501:

Steel with strength class 5.8.

W501CIN:

Stainless steel (Aisi 303).

Surface finish:

Turned with low roughness.

Colour:

W501:

Nickel plated (galvanic treatment).

W501CIN:

Natural.

Alternative finishes:

Black-oxide treatment:

(replace the final letter of the code (H) with letter B (W501070.SM0801B).

Galvanising:

(replace the final letter of the code (H) with letter Z (W501070.SM0801Z).

Handgrip:

Conical knob I500 in reinforced PA6 in black (Ral 9011) [see page].

Handgrip fixing method:

Push-fit, removable.

Hole:

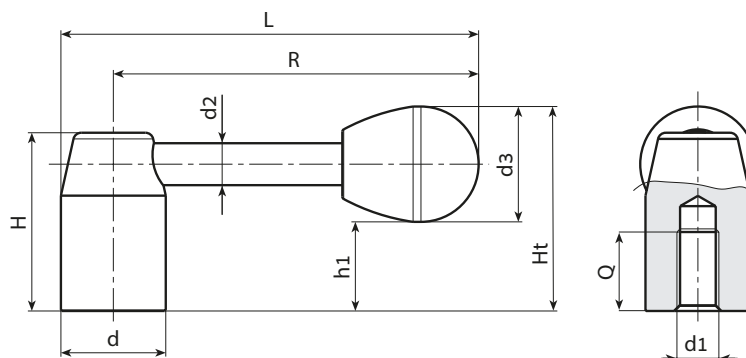
Female threaded hole machined from solid metal (thread tolerance 6H).

Fixing method:

For fixing systems, or execution of keyways or square holes, please refer to the technical notes attached to the catalogue.

Special requests:

- Upon request and for special quantities levers can be supplied with custom hole diameter d1.
- Upon request and for special quantities handgrip available in the colours indicated in the chart [page].



Version W501 - nickel-plated steel

Stock availability as % (🛒)

90% (●) - 40% (●) - 5% (●)

🛒	art.	d	R	L	H	Ht	h1	d2	d3	d1 _{6H}	Q	g
●	W501070.SM0801H	20	70	80	34	39	17	8	22	M8	15	89
●	W501080.SM1001H	22	80	91	38	43	21	8	22	M10	15	111
●	W501095.SM1201H	24	95	107	42	49	21	10	28	M12	18	160
●	W501110.SM1201H	28	110	124	48	54	26	12	28	M12	18	280
●	W501125.SM1601H	32	125	141	52	59	27	12	32	M16	22	340
●	W501140.SM1601H	36	140	158	58	64	32	14	32	M16	23	513
●	W501150.SM2001H	40	150	170	64	71	34	16	37	M20	25	687
●	W501170.SM2001H	45	170	192.5	70	77	40	16	37	M20	28	890

Version W501CIN - stainless steel (Aisi 303)

INOX

🛒	art.	d	R	L	H	Ht	h1	d2	d3	d1 _{6H}	Q	g
●	W501070.IM0801CIN	20	70	80	34	39	17	8	22	M8	15	89
●	W501080.IM1001CIN	22	80	91	38	43	21	8	22	M10	15	111
●	W501095.IM1201CIN	24	95	107	42	49	21	10	28	M12	18	160
●	W501110.IM1201CIN	28	110	124	48	54	26	12	28	M12	18	280
●	W501125.IM1601CIN	32	125	141	52	59	27	12	32	M16	22	340
●	W501140.IM1601CIN	36	140	158	58	64	32	14	32	M16	23	513
●	W501150.IM2001CIN	40	150	170	64	71	34	16	37	M20	25	687



Arbel Agencies LTD.

11 Ba'alei Hamelacha st. Qiryat Bialik P.O.B 1095, ZIP 2751311, ISRAEL

+972(0)48736969 ☎ +972(0)48730708 📠 info@arbel-ltd.com 📧 www.arbel-ltd.com 🌐

