

W298



ALUMINIUM CONTROL HANDWHEEL WITH SMOOTH BORE AND REVOLVING FOLDING HANDLE

Materials:
Die-cast aluminium.

Surface finish:
Satin finish, except for the sections (T) with low surface roughness obtained by turning.

Colour:
Nickel plated (galvanic treatment).

Alternative colours (min. 50 pieces):
Black epoxy powder coated:
(replace the final letter of the code (H) with letter V (W298100.AD10V).

Cap:
Central cap in black polyamide (RAL 9011 code 01).

Alternative cap colours:
The central cap for the black handwheel will be grey (RAL 7035 code no. 13).

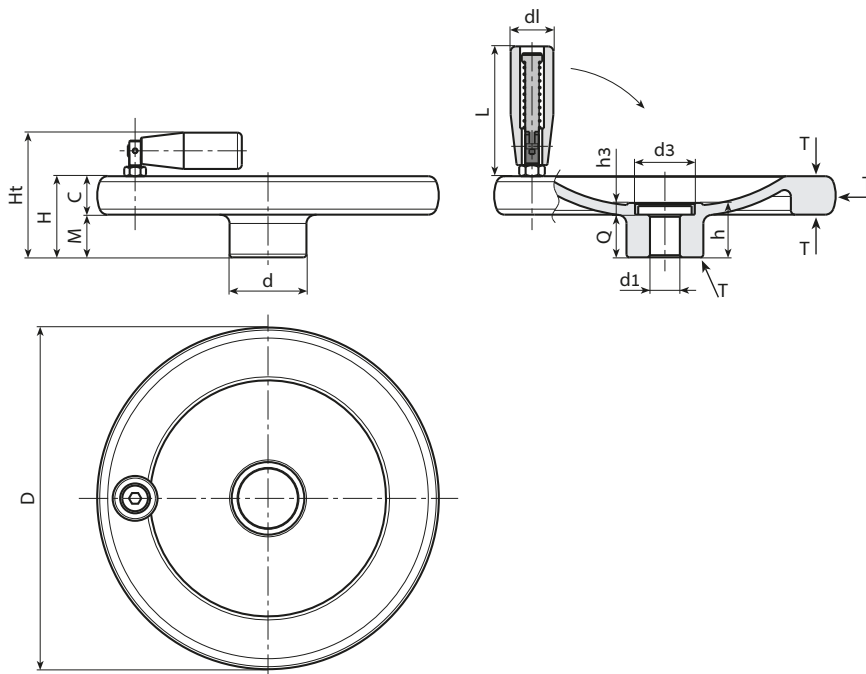
Lateral handle:
Revolving, folding handle art. M136 [page].

Hole:
Smooth through hole, remachined with H7 tolerance.

Special Requests:

- Upon request and for special quantities handwheels can be supplied on customer's drawing with hole diameter d1.

Fixing method:
For fixing systems, or execution of keyways or square holes, please refer to the technical notes attached to the catalogue.



Stock availability as % (🛒)
90% (●) - 40% (●) - 5% (●)

🛒	Art.	d	D	H	m	c	h	h3	d3	d1H7	Q	d1	L	ḡ
●	W298080.AD08H	26	80	26	14	12	21	5.5	20	8	15.5	20	56	181
●	W298100.AD10H	28	100	28	14	14	21.5	5.5	20	10	16	20	56	279
●	W298130.AD12H	36	130	35	19	16	25.5	5.5	28	12	20	25	76	506
●	W298160.AD14H	36	160	38	20	18	25.5	5.5	28	12	20	25	76	756
●	W298200.AD16H	42	200	44	24	20	31.5	6	34	16	25.5	26	89	1337

Attention: For a minimum of 50 pieces the diameter d1 can be customised (hole tolerance H7).



Arbel Agencies LTD.
11 Ba'alei Hamelacha st. Qiryat Bialik P.O.B 1095, ZIP 2751311, ISRAEL
+972(0)48736969 ☎ +972(0)48730708 📠 info@arbel-ltd.com 🌐 www.arbel-ltd.com 🌐

