

W100HIN

NEW

+200°
-40°

Aisi
304

RoHS
COMPLIANT

STAINLESS STEEL LOBED HANDWHEEL WITH THREADED HOLE

INOX

Materials:

Precision-cast stainless steel, (Aisi 304).

Surface finish:

Electropolished satin finish.

Colour:

Natural.

Hole:

Version HNM:

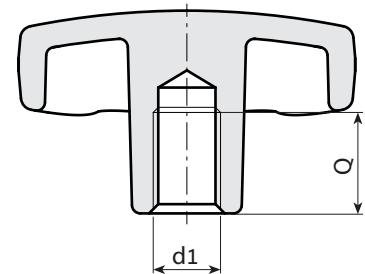
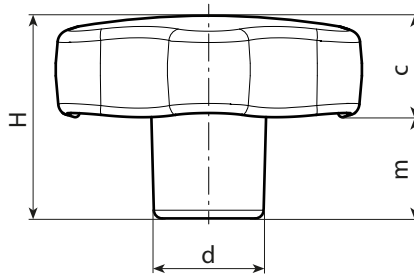
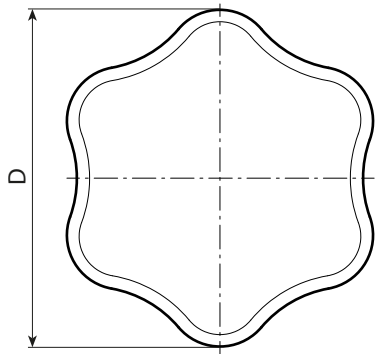
Female threaded hole (thread tolerance 6H).

Version HND:

Blind smooth bore (bore tolerance H7).

Special requests:

- None.



Version HNM: with female threaded hole.

BOTECO METAL LINE

Stock availability as % (🛒)
90% (●) - 40% (●) - 5% (●)

INOX

🛒	Art.	D	H	d	m	d1 _{6H}	Q	g
●	W10030.HNM05HIN	30	21	11	11	M5	10	-
●	W10030.HNM06HIN	30	21	11	11	M6	10	-
●	W10040.HNM06HIN	40	24	13	12	M6	12	-
●	W10040.HNM08HIN	40	24	13	12	M8	15	-
●	W10050.HNM08HIN	50	31	15	13,5	M8	15	-
●	W10050.HNM10HIN	50	31	15	13,5	M10	18	-
●	W10060.HNM08HIN	60	39	17	18	M8	15	-
●	W10060.HNM10HIN	60	39	17	18	M10	18	-
●	W10060.HNM12HIN	60	39	17	18	M12	22	-

Version HND: with blind smooth bore H7

INOX

🛒	Art.	D	H	d	m	d1 _{H7}	Q	g
●	W10040.HND08HIN	40	24	13	12	08	15	-
●	W10050.HND10HIN	50	31	15	13,5	10	18	-
●	W10060.HND12HIN	60	39	17	18	12	22	-