

S600

CABLE CLAMP WITH HEXAGONAL RING NUT



Materials:

Reinforced polyamide.
Resistant to oils and greases.

Surface finish:

Satin.

Colour:

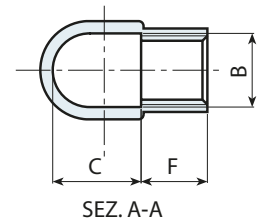
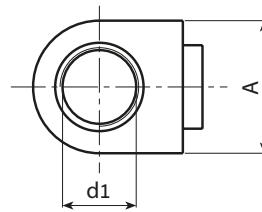
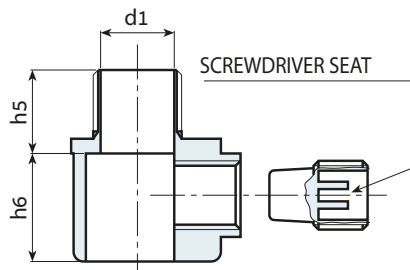
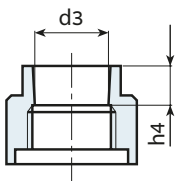
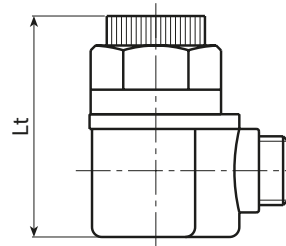
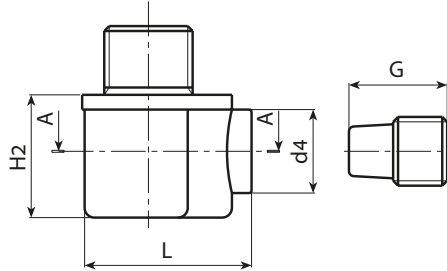
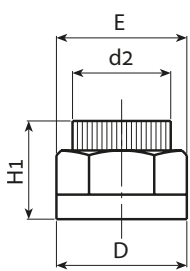
Black (RAL 9011).

Hole:

Smooth through hole obtained by moulding the plastic.

Special Requests:

- None.



art.	B	C	D	E	F	G	L	H1	H2	h4	h5	h6	d1	d2	d3	d4	Lt	g
● S60038.TG1001	M14	17.5	26	23	14.5	19	34.5	20	22	7	16.5	19	10.5	19	14	17	43	13
● S60038.TG1101	M14	17.5	26	23	14.5	19	34.5	20	22	7	16.5	19	11.5	19	14	17	43	13
● S60038.TG1401	M14	17.5	26	23	14.5	19	34.5	20	22	7	16.5	19	14.5	19	14	17	43	13

Stock availability as % (🛒)
90% (●) - 40% (●) - 5% (●)