

S599

PANEL CABLE CLAMP



Materials:

Reinforced polyamide.
Resistant to oils and greases.

Surface finish:

Satin.

Colour:

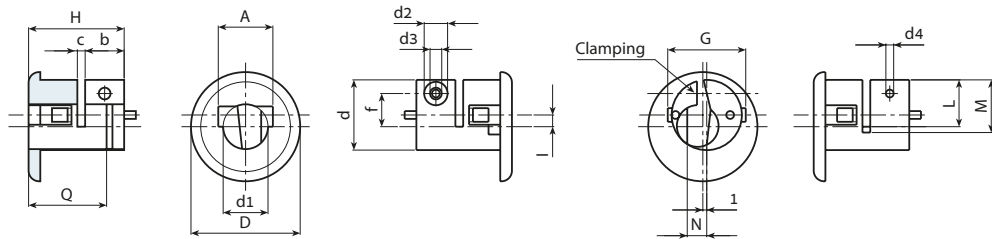
Black (RAL 9011).

Hole:

Smooth through hole obtained by moulding the plastic.

Special Requests:

- None.



Stock availability as % (🛒)
90% (●) - 40% (●) - 5% (●)

🛒	art.	D	H	d	d1	d2	d3	d4	A	b	c	f	G	I	L	M	N	Q	🛒
●	S59928.T01	28	25	18	11.5	6	3	2	14	10	2	8.5	20	3	12	15	5	13	65