

S230

INSULATING WASHER PAIR



Materials:

Phenolic resin.
Resistant to oils and greases.
Resistant to high temperatures.

Surface finish:

Glossy.

Colour:

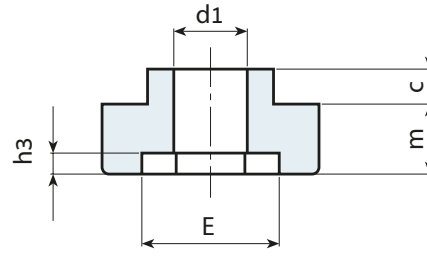
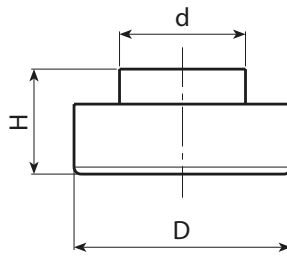
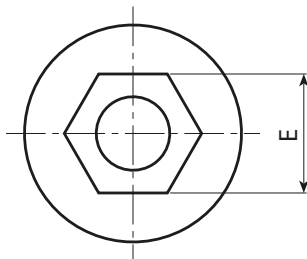
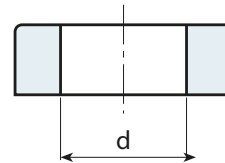
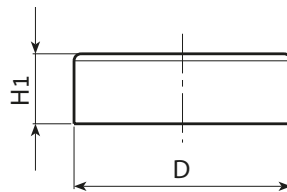
Black (RAL 9011).

Hole:

Smooth through hole obtained by moulding the plastic.

Special Requests:

- None.



Stock availability as % (🛒)
90% (●) - 40% (●) - 5% (●)

🛒	art.	D	d	H	H1	c	m	E	h3	d1	🏠
●	S23020C.BG06	20	11	12	5	4	8	10	3	6.5	8
●	S23031C.BG08	31	18	15	10	5	10	13	3	9	22
●	S23031C.BG10	31	18	15	10	5	10	17	3	11.5	18
●	S23031C.BG12	31	18	15	10	5	10	19	3	13	15
●	S23038C.BG14	35	22	18	10	5	12	22	5	14.5	24