

# S228

## SHORT-NECK WASHER PAIR



**Materials:**

Reinforced polyamide.  
Resistant to oils and greases.

**Surface finish:**

Smooth.

**Colour:**

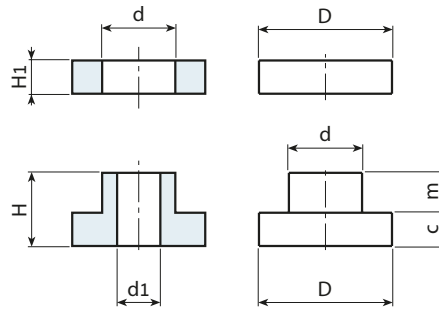
Black (RAL 9011).

**Hole:**

Smooth through hole obtained by moulding the plastic.

**Special Requests:**

- None.



art.	D	H	d	H1	m	c	d1
S22820C.TG06	20	11	11	5	6.5	4.5	6.5

# S229

## INSULATING WASHER PAIR



**Materials:**

Reinforced polyamide.  
Resistant to oils and greases.

**Surface finish:**

Smooth.

**Colour:**

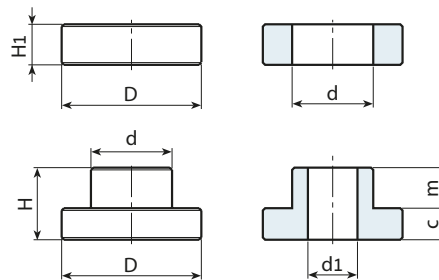
Black (RAL 9011).

**Hole:**

Smooth through hole obtained by moulding the plastic.

**Special Requests:**

- None.



art.	D	H	d	H1	m	c	d1
S22931C.TG10	31	16	17.5	8.5	9	7	10.5

Stock availability as % (🛒)  
90% (●) - 40% (●) - 5% (●)