

S228

SHORT-NECK WASHER PAIR



Materials:

Reinforced polyamide.
Resistant to oils and greases.

Surface finish:

Smooth.

Colour:

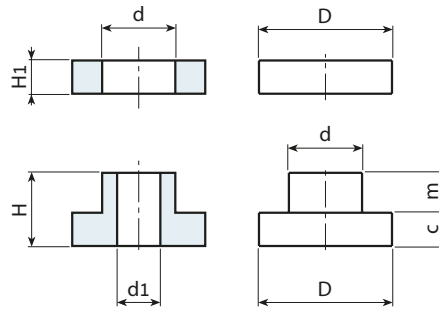
Black (RAL 9011).

Hole:

Smooth through hole obtained by moulding the plastic.

Special Requests:

- None.



🛒	art.	D	H	d	H1	m	c	d1	📦
●	S22820C.TG06	20	11	11	5	6.5	4.5	6.5	9

S229

INSULATING WASHER PAIR



Materials:

Reinforced polyamide.
Resistant to oils and greases.

Surface finish:

Smooth.

Colour:

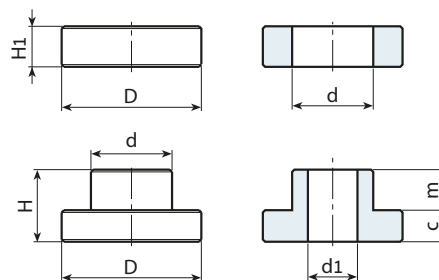
Black (RAL 9011).

Hole:

Smooth through hole obtained by moulding the plastic.

Special Requests:

- None.



🛒	art.	D	H	d	H1	m	c	d1	📦
●	S22931C.TG10	31	16	17.5	8.5	9	7	10.5	13

Stock availability as % (🛒)
90% (●) - 40% (●) - 5% (●)