

S114

MALE CONNECTOR FOR PANEL



Materials:

Phenolic resin.
Resistant to oils and greases.
Resistant to high temperatures.

Surface finish:

Glossy.

Colour:

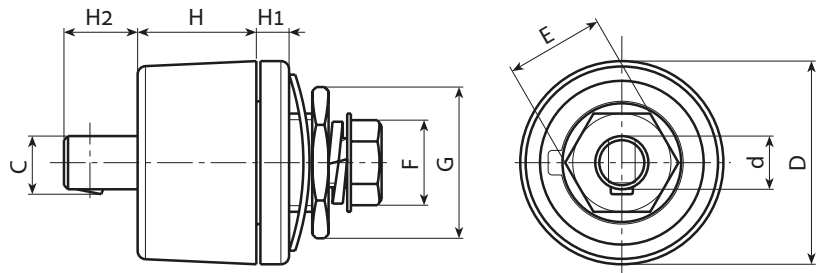
Black (RAL 9011).

Inserts:

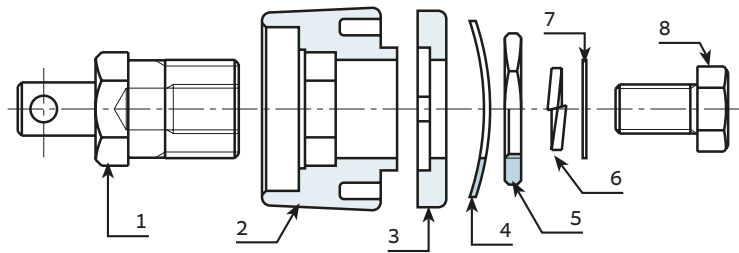
- (1) Brass insert with male connector UNI.
- (4) F25-00: Black-oxide treated steel toothed washer DIN 6798.
- (4) F35-00: Black-oxide treated steel corrugated washer DIN 137.
- (4) F70-95: Black-oxide treated steel corrugated washer DIN 137.
- (5) Yellow passivated steel threaded hexagon ring nut.
- (6) Black-oxide treated steel split washer UNI 1751.
- (7) Yellow passivated steel washer.
- (8) Yellow passivated hex head screw DIN933/UNI 5739.

Special Requests:

- None.



S114+S113



Stock availability as % (🛒)
90% (●) - 40% (●) - 5% (●)

🛒	art.	D	H	H1	H2	d	c	E	F	G	📦	Amp. Max
●	S114.M2500	33	14	4	7	9	9.5	14	13	22	60	200
●	S114.M3550	50.5	29	7	9	13	14	21	17	27	194	400
●	S114.M7000	50.5	29	7	9	13	14	24	19	32	242	500