

S113

FEMALE CABLE CONNECTOR



Materials:

(4) Polypropylene and SBS rubber alloy, 75 Shore.
Resistant to oils and greases.

Surface finish:

Smooth.

Colour:

Black (RAL 9011).

Inserts:

(1) Brass insert with female connector EN 60794:12.
(2) Soft copper cable collector tube.
(3) Hexagon socket grub screw DIN 913-45H (for version F95-00 no. 2 grub screws).

Special Requests:

- None.



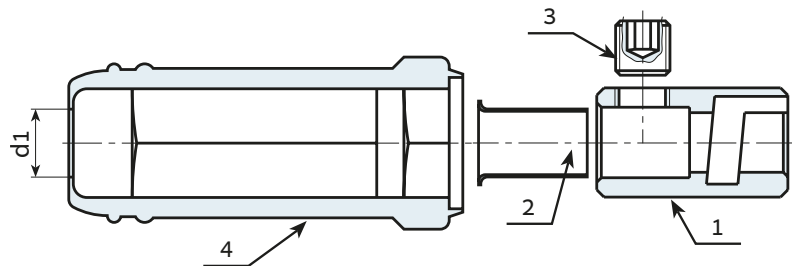
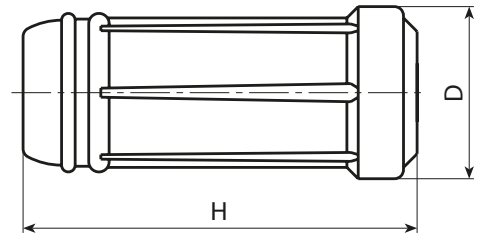
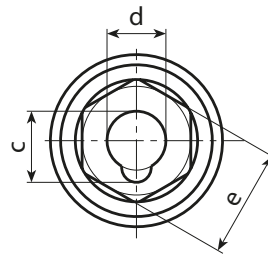
S113+S112



S113+S114



S113+S118



Stock availability as % (🛒)
90% (●) - 40% (●) - 5% (●)

🛒	art.	D	H	d	c	e	d1	📦	Amp. Max
●	S113.F2500	24.5	59	9	10.5	14	8.5	38	200
●	S113.F3550	35	87	13	16	21	11	104	250
●	S113.F7000	38	87	13	16.5	24	15.5	151	400
●	S113.F9500	38	87	13	16	24	15.5	188	500