

S112

MALE CABLE CONNECTOR



Materials:

(4) Polypropylene and SBS rubber alloy, 75 Shore.
Resistant to oils and greases.

Surface finish:

Smooth.

Colour:

Black (RAL 9011).

Inserts:

(1) Brass insert with male connector EN 60794:12.
(2) Soft copper cable collector tube.
(3) Hexagon socket grub screw DIN 913-45H (for version M95-00 no. 2 grub screws).

Special Requests:

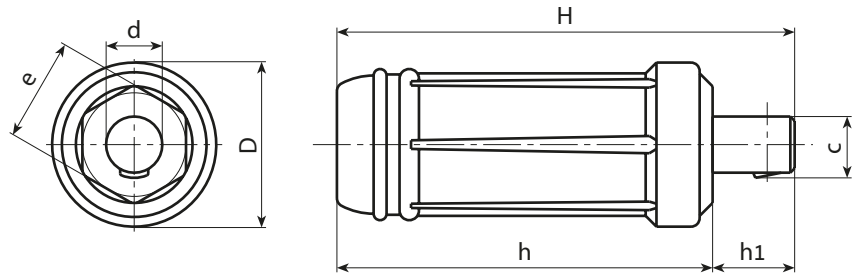
- None.



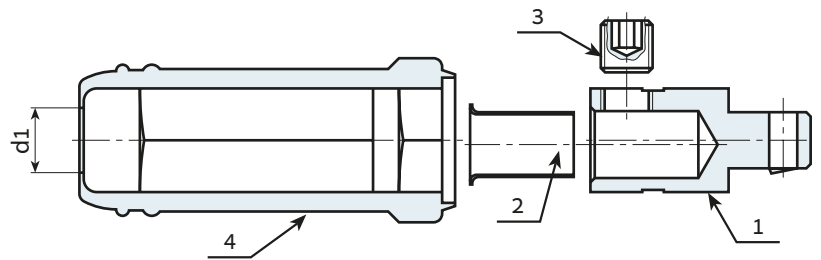
S111+S112



S112+S117



S112+S113



Stock availability as % (🛒)
90% (●) - 40% (●) - 5% (●)

🛒	art.	D	H	h	h1	d	c	e	d1	📦	Amp. Max
●	S112.M2500	24.5	70	59	11	9	10	14	8.5	37	200
●	S112.M3550	35	106	87	19	13	14.5	21	11	130	250
●	S112.M7000	38	106	87	19	13	14.5	24	15.5	148	400
●	S112.M9500	38	106	87	19	13	14.5	24	15.5	200	500