

# R301



## SHEET METAL RIM / RUBBER WHEEL WITH ROUND STEEL SWIVEL SUPPORT AND SMOOTH THROUGH HOLE

### Materials:

#### Wheel body:

Two stamped sheet metal disks (steel DD13) riveted together to create a single body.

#### Tread:

Natural rubber trapezoidal tread. Hardness  $85 \pm 4$  Shore A.

#### Surface finish:

Smooth.

#### Colour:

(2) Black (RAL 9011).

(1-3-4-5-6) Galvanised blue.

#### Wheel rotation:

The hole for the pivot pin is stamped in sheet metal. A black polyamide insert is positioned between the pin and the hole for protection.

#### Bracket (3):

Steel fork (DD13).

#### Rotating assembly (5):

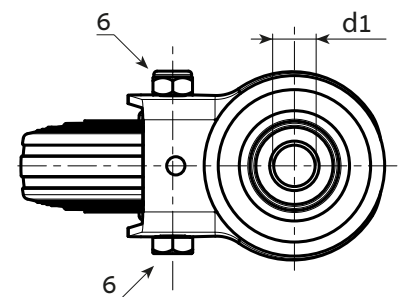
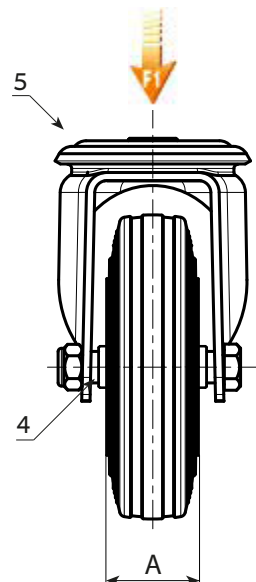
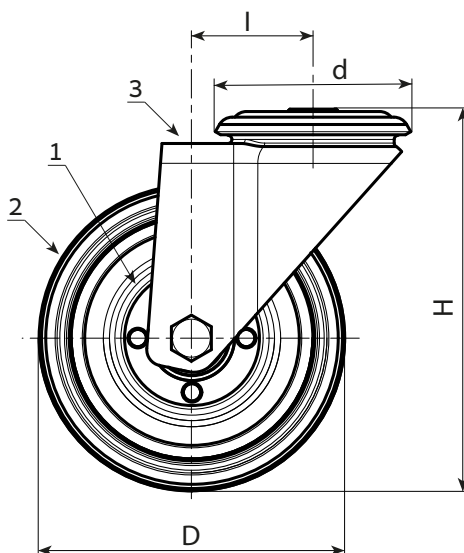
Steel rotating assembly with double ball race and smooth fixing hole, (hole tolerance H7).

#### Wheel fastening (6):

Steel hex head screw, coupled with a steel nut.

#### Special requests:

- Upon request and for a minimum of 20 pieces, the wheel can be supplied with a needle roller cage, (replace code no. R301 with code no. R331).



Stock availability as % (🛒)  
90% (●) - 40% (●) - 5% (●)

🛒	art.	D	A	H	I	d	d1H7	g	F1 (Kg)
●	R301080.T25D12	80	25	108	32	64	12	550	50
●	R301100.T30D12	100	30	127	32	64	12	672	70
●	R301125.T37D12	125	37.5	155	32	64	12	741	100
●	R301150.T37D12	150	37.5	183	35	65	12	-	140
●	R301180.T45D16	180	45	230	48	95	16	-	180
●	R301200.T50D16	200	50	240	48	95	16	2919	200