

Q264

6-LOBE WASHER



Materials:

Reinforced polyamide.
Resistant to oils and greases.

Surface:

Satin.

Colour:

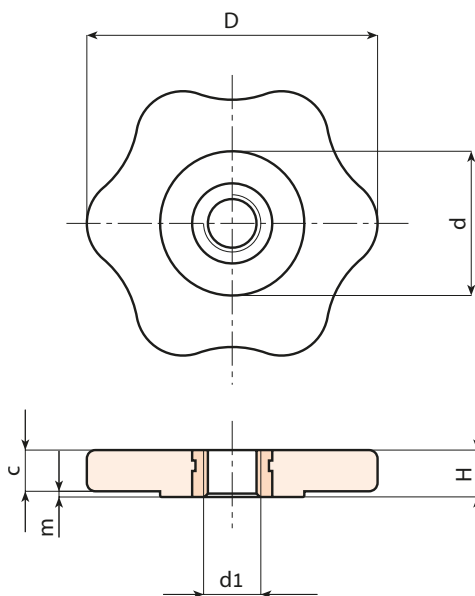
Black (RAL 9011).

Inserts:

Brass insert with threaded through hole (thread tolerance 6H).

Special Requests:

- Upon request and for special quantities inserts can be supplied in different materials.
- Upon request and for special quantities available in the colours indicated in the chart [page].



Stock availability as % (🛒)
90% (●) - 40% (●) - 5% (●)

🛒	art.	D	H	d	c	m	d16H	🛒
●	Q26450.TM0601P	50	8	25	7	1	M6	18
●	Q26450.TM0801P	50	8	25	7	1	M8	18
●	Q26450.TM1001P	50	8	25	7	1	M10	20