

# Q261

## LOBED WASHER



### Materials:

Reinforced polyamide.  
Resistant to oils and greases.

### Surface:

Satin.

### Colour:

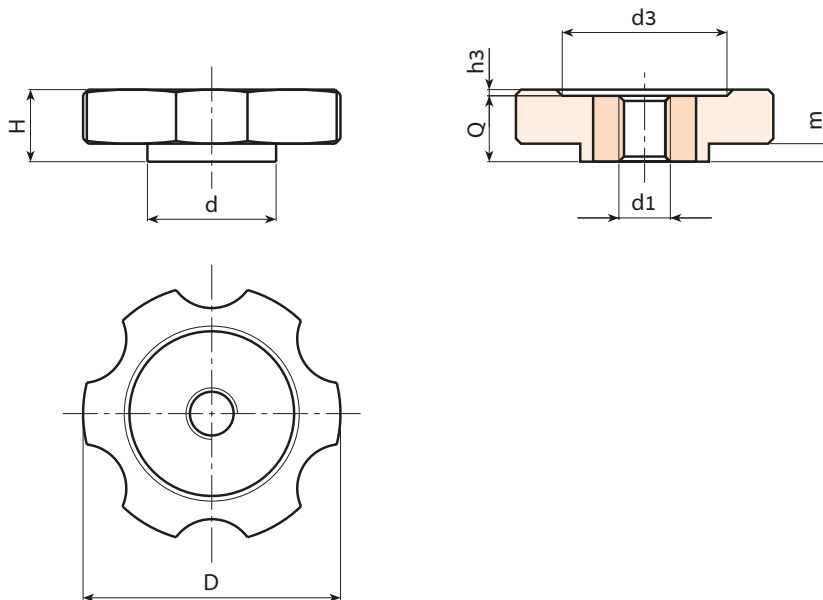
Black (RAL 9011).

### Inserts:

Galvanised steel insert with threaded through hole (thread tolerance 6H).

### Special Requests:

- Upon request and for special quantities inserts can be supplied in different materials.
- Upon request and for special quantities available in the colours indicated in the chart [page ].



Stock availability as % (🛒)  
90% (●) - 40% (●) - 5% (●)

🛒	art.	D	H	d	m	h3	d3	d1 <sub>6H</sub>	Q	🛒
●	Q26140.TM0801P	40	12	25	2	1.5	22	M8	11	21
●	Q26140.TM1001P	40	12	25	2	1.5	22	M10	11	22
●	Q26140.TM1201P	40	12	25	2	1.5	22	M12	11	24
●	Q26150.TM0801P	50	14	25	3.5	1.5	32	M8	13	31
●	Q26150.TM1001P	50	14	25	3.5	1.5	32	M10	13	32
●	Q26150.TM1201P	50	14	25	3.5	1.5	32	M12	13	35