

PIE.40-50-60

SMALL MOUNTING FOOT BASE (40-50-60)



Materials:

Reinforced polyamide. Resistant to oils and greases.

Surface finish:

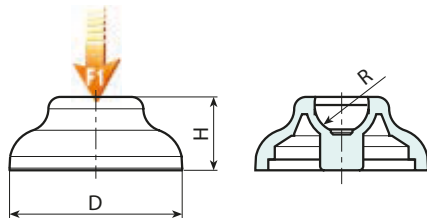
Satin.

Colour:

Black (RAL 9011).

Special requests:

- Upon request and for special quantities the foot can be supplied in Orange (RAL 2004).



Stock availability as % (🛒)
90% (●) - 40% (●) - 5% (●)

🛒	Art.	D	H	R	📐	F1 (N)
●	PIE.040S12.4	40	17	12.4	12	10000
●	PIE.040S15	40	17	15	12	10000
●	PIE.050S12.4	50	18	12.4	16	10000
●	PIE.050S15	50	18	15	16	10000
●	PIE.060S12.4	60	20	12.4	25	10000
●	PIE.060S15	60	20	15	24	15000
●	PIE.060S24	60	20	24	24	15000

PIE. 80-105-130

MOUNTING FOOT BASE WITH GROUND FIXING (80-105-130)



Materials:

Reinforced polyamide. Resistant to oils and greases.

Surface finish:

Satin.

Colour:

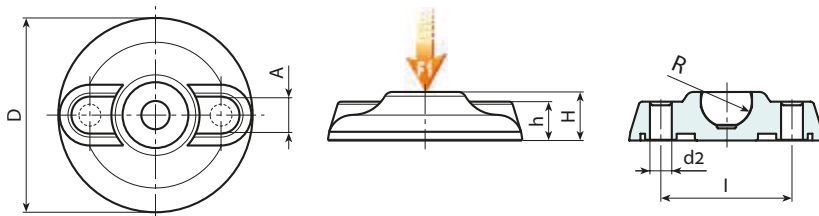
Black (RAL 9011).

Ground fixing:

The mounting foot is supplied with closed holes for anchoring to the ground. To open them pierce the plastic membrane (see drawing).

Special requests:

- Upon request and for special quantities the foot can be supplied in Orange (RAL 2004).



Stock availability as % (🛒)
90% (●) - 40% (●) - 5% (●)

🛒	Art.	D	H	h	l	A	d2	R	📐	F1 (kN)
●	PIE.080S12.4	80	20	20	54	16	9 (M8)	12.4	49	10
●	PIE.080S15	80	20	20	54	16	9 (M8)	15	45	13
●	PIE.080S24	80	20	20	54	16	9 (M8)	24	47.5	25
●	PIE.105S15	105	22	21	74	18.5	11 (M10)	15	99	15
●	PIE.105S24	105	22	21	74	18.5	11 (M10)	24	97	25
●	PIE.130S15	130	24	21	99	20	13 (M12)	15	165	17
●	PIE.130S24	130	24	21	99	20	13 (M12)	24	163	25