

# PEPVZE16-PEPINE16



## STEEL THREADED STEM TYPE A - WITH JOINT R15 AND HEXAGONAL BASE 16 - TURNED

### Materials:

#### PEP.VZE16:

Free-cutting steel (39SMnPb36).

#### PEP.INE16:

Stainless steel (Aisi 303).

### Surface finish:

Smooth.

### Colour:

#### PEP.VZE16:

Blue galvanising.

#### PEP.INE16:

Natural.

### Stem:

Turned stem with hexagonal base (type A) with rolled thread (thread tolerance 6g).

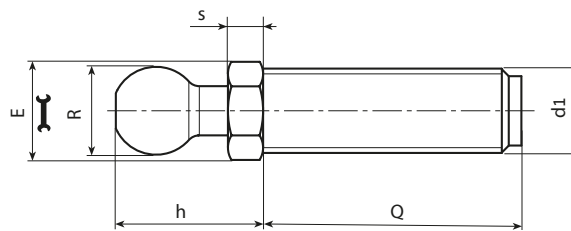
### Special requests:

- Upon request and for special quantities the length and geometry of the inserts can be supplied to customer's drawing.

### Compatibility with bases:

These stems are compatible with the following foot bases:

PIE.060S15 • PIE.080S15 • PIE.105S15 • PIE.130S15 • PIE.700080S19



### Version PEP.VZE: galvanised steel

Stock availability as % (🛒)  
90% (●) - 40% (●) - 5% (●)

Art.	E	s	h	R	d1 <sub>6g</sub>	Q	g
PEP.VZE16X6M12X..	16	6,5	23,5	15	M12	50-70-90-110	63-76-91-107
PEP.VZE16X6M14X..	16	6,5	23,5	15	M14	50-70-90-110-150	75-95-116-133-167
PEP.VZE16X6M16X..	16	6,5	23,5	15	M16	50-70-90-110-130-150-170-190	91-117-143-168-194-219-247-270

### Version PEP.INE: stainless steel (Aisi 303)



Art.	E	s	h	R	d1 <sub>6g</sub>	Q	g
PEP.INE16X6M12X..	16	6,5	23,5	15	M12	70-90-110	76-91-116
PEP.INE16X6M14X..	16	6,5	23,5	15	M14	70-110-130	95-133-150
PEP.INE16X6M16X..	16	6,5	23,5	15	M16	50-70-90-110-130-150-170-190	91-117-143-168-194-219-247-275

Enter the selected stud length in place of the two dots . . in the item code.

Customised stud length available for a minimum of 100 pieces.

### Arbel Agencies LTD.



11 Ba'alei Hamelacha st. Qiryat Bialik P.O.B 1095, ZIP 2751311, ISRAEL  
+972(0)48736969 ☎ +972(0)48730708 📠 info@arbel-ltd.com 📧 www.arbel-ltd.com 🌐

