

# PEPVZE13-PEPINE13



## STEEL THREADED STEM TYPE A - WITH JOINT R12.4 AND HEXAGONAL BASE 13 - TURNED

### Materials:

#### PEP.VZE13:

Free-cutting steel (39SMnPb36).

#### PEP.INE13:

Stainless steel (Aisi 303).

### Surface finish:

Smooth.

### Colour:

#### PEP.VZE16:

Blue galvanising.

#### PEP.INE16:

Natural.

### Stem:

Turned stem with hexagonal base (type A) with rolled thread (thread tolerance 6g).

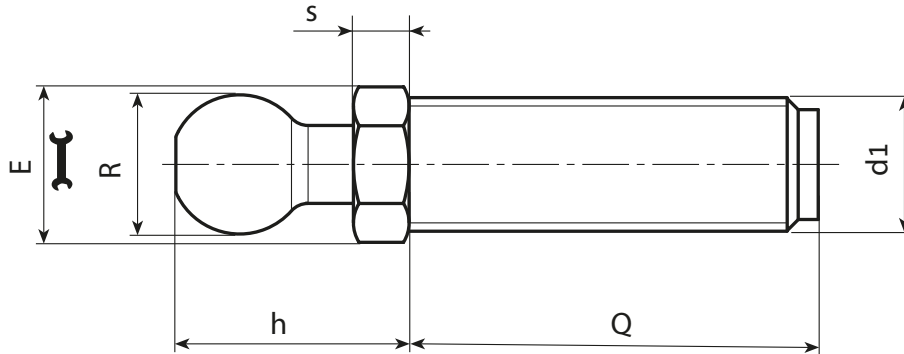
### Special requests:

- Upon request and for special quantities the length and geometry of the inserts can be supplied to customer's drawing.

### Compatibility with bases:

These stems are compatible with the following foot bases:

PIE.040S12,4 • PIE.050S12,4 • PIE.060S12,4 • PIE.080S12,4 • PIE.700080S12,8



### Version PEP.VZE: galvanised steel

Stock availability as % (🛒)  
90% (●) - 40% (●) - 5% (●)

🛒	Art.	E	s	h	R $\pm$ 0,1	d1 <sub>6g</sub>	Q	Q Max	g
-	PEP.VZE13X5M08X..	13	5	20	12.4	M8	A.R.	110	-
-	PEP.VZE13X5M10X..	13	5	20	12.4	M10	A.R.	110	-
-	PEP.VZE13X5M12X..	13	5	20	12.4	M12	A.R.	110	-

### Version PEP.INE: stainless steel (Aisi 303)



🛒	Art.	E	s	h	R $\pm$ 0,1	d1 <sub>6g</sub>	Q	Q Max	g
-	PEP.INE13X5M08X..	13	5	20	12.4	M8	45-70	70	29-36
-	PEP.INE13X5M10X..	13	5	20	12.4	M10	45-70	70	37-70
-	PEP.INE13X5M12X..	13	5	20	12.4	M12	45-70-100	100	46-65-85

Enter the selected stud length in place of the two dots . . in the item code.

A.R. = Customised stud length available for a minimum of 100 pieces.

### Arbel Agencies LTD.



11 Ba'alei Hamelacha st. Qiryat Bialik P.O.B 1095, ZIP 2751311, ISRAEL  
+972(0)48736969 ☎ +972(0)48730708 📠 info@arbel-ltd.com 📧 www.arbel-ltd.com 🌐

