

STEEL THREADED STEM - LONG SERIES - WITH HEXAGONAL BASE - TURNED

Materials:

PEP.VZE:

Free-cutting steel (39SMnPb36).

PEP.INE:

Stainless steel (Aisi 303).

Surface finish:

Smooth.

Blue galvanising.

PEP.INE:

Natural.

Colour:

PEP.VZE:

Blue galvanising.

PEP.INE:

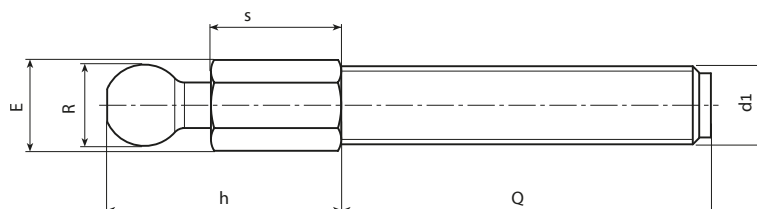
Natural.

Thread:

Turned stem with hexagonal base (type A) with rolled thread (thread tolerance 6g).

Special requests:

- Upon request and for special quantities the length and geometry of the inserts can be supplied to customer's drawing.



Version with hexagonal base 13 - ball R. 12.4 - Galvanised steel

Stock availability as % (🛒)
90% (🟢) - 40% (🟡) - 5% (🔴)

🛒	Art.	E	s	h	R	d1 _{6g}	Q	Q <>	g
🔴	PEP.VZE13X20M08X..	13	20	35	12.4	M8	A.R.	60 ÷ 300	-
🔴	PEP.VZE13X20M10X..	13	20	35	12.4	M10	A.R.	80 ÷ 300	-
🔴	PEP.VZE13X20M12X..	13	20	35	12.4	M12	A.R.	100 ÷ 300	-

Enter the selected stud length in place of the two dots . . in the item code. Customised stud length available for a minimum of 100 pieces.

These stems are compatible with the following foot bases: • PIE.040S12,4 • PIE.050S12,4 • PIE.060S12,4 • PIE.080S12,4 • PIE.700080S125



Version with hexagonal base 13 - ball R. 12.4 - Stainless steel (Aisi 303)

🛒	Art.	E	s	h	R	d1 _{6g}	Q	Q <>	g
🔴	PEP.INE13X20M08X..	13	20	35	12.4	M8	A.R.	50 ÷ 300	-
🔴	PEP.INE13X20M10X..	13	20	35	12.4	M10	A.R.	70 ÷ 300	-
🔴	PEP.INE13X20M12X..	13	20	35	12.4	M12	A.R.	100 ÷ 300	-

Enter the selected stud length in place of the two dots . . in the item code. Customised stud length available for a minimum of 100 pieces.

These stems are compatible with the following foot bases: • PIE.040S12,4 • PIE.050S12,4 • PIE.060S12,4 • PIE.080S12,4 • PIE.700080S125

Version with hexagonal base 13 - ball R. 12.4 - Galvanised steel

🛒	Art.	E	s	h	R	d1 _{6g}	Q	Q <>	g
🔴	PEP.VZE16X20M12X..	16	20	37	15	M12	A.R.	135 ÷ 300	-
🔴	PEP.VZE16X20M14X..	16	20	37	15	M14	A.R.	135 ÷ 300	-
🔴	PEP.VZE16X20M16X..	16	20	37	15	M16	A.R.	195 ÷ 300	-

Enter the selected stud length in place of the two dots . . in the item code. Customised stud length available for a minimum of 100 pieces.

These stems are compatible with the following foot bases: • PIE.040S12,4 • PIE.050S12,4 • PIE.060S12,4 • PIE.080S12,4 • PIE.700080S125



Version with hexagonal base 16 - ball R. 15 - Stainless steel (Aisi 303)

🛒	Art.	E	s	h	R	d1 _{6g}	Q	Q <>	g
🔴	PEP.INE16X20M12X..	16	20	37	15	M12	A.R.	95 ÷ 300	-
🔴	PEP.INE16X20M14X..	16	20	37	15	M14	A.R.	135 ÷ 300	-
🔴	PEP.INE16X20M16X..	16	20	37	15	M16	A.R.	175 ÷ 300	-

Enter the selected stud length in place of the two dots . . in the item code. Customised stud length available for a minimum of 100 pieces.

These stems are compatible with the following foot bases: • PIE.060S15 • PIE.080S15 • PIE.105S15 • PIE.130S15 • PIE.700080S15