

PEPFZE13-R12,4



C10



GALVANISED STEEL THREADED STEM TYPE A - WITH JOINT R12.4 AND HEXAGONAL BASE 13 - OBTAINED BY COLD MOULDING

Materials:

Steel with strength class 4.8.

Surface finish:

Smooth.

Colour:

Blue galvanising.

Thread:

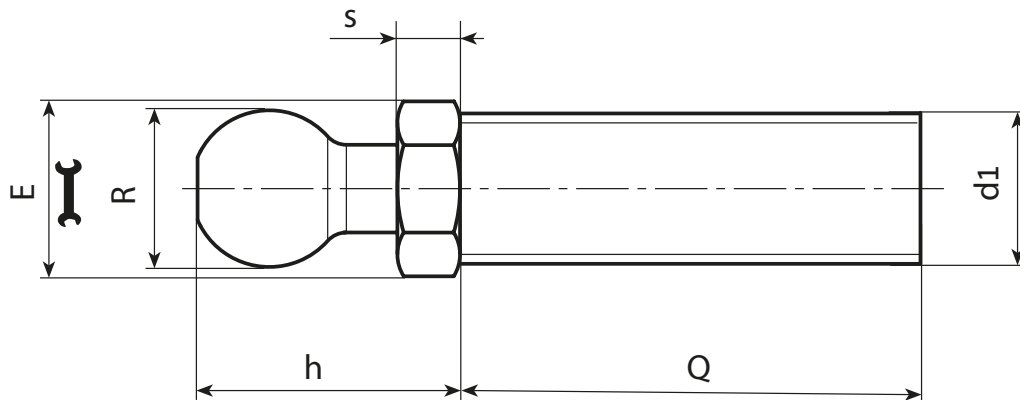
Moulded stem with hexagonal base (type A) with rolled thread (thread tolerance 6g).

Special requests:

- Upon request and for a minimum quantity of 30,000 pieces, inserts can be supplied with length to customer's drawing.

Compatibility with bases:

These stems are compatible with the following foot bases:
 PIE.040S12,4 • PIE.050S12,4 • PIE.060S12,4 • PIE.080S12,4 •
 PIE.700080S12,8



Stock availability as % (🛒)
 90% (●) - 40% (●) - 5% (●)

🛒	Art.	E	s	h	R±0,1	d1 _{6g}	Q	📦
●	PEP.FZE13X5M08X45	13	5	20	12.4	M8	45	29
●	PEP.FZE13X5M08X70	13	5	20	12.4	M8	70	36
●	PEP.FZE13X5M10X45	13	5	20	12.4	M10	45	37
●	PEP.FZE13X5M10X70	13	5	20	12.4	M10	70	49
●	PEP.FZE13X5M10X100	13	5	20	12.4	M10	100	85
●	PEP.FZE13X5M12X45	13	5	20	12.4	M12	45	46
●	PEP.FZE13X5M12X70	13	5	20	12.4	M12	70	65
●	PEP.FZE13X5M12X100	13	5	20	12.4	M12	100	85