

P902



MOUNTING FOOT WITH GROUND FIXING AND STEEL ARTICULATED STEM TYPE A - BALL R15

Materials:

Reinforced polyamide. Resistant to oils and greases.

Surface finish:

Satin.

Colour:

Black (RAL 9011).

Inserts:

P902:

Galvanised steel threaded and articulated stem (ball R.15) with hexagonal base (thread tolerance 6g).

P902CIN

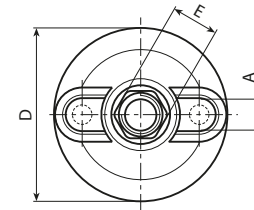
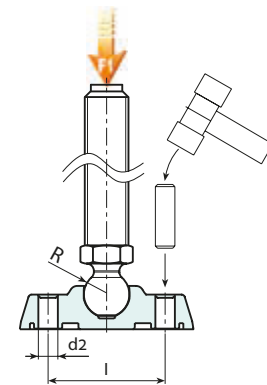
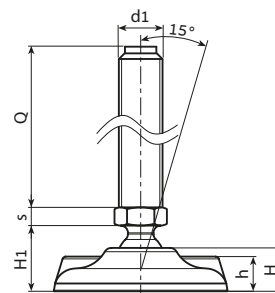
Stainless steel threaded and articulated stem (ball R.15) with hexagonal base (Aisi 303) (thread tolerance 6g).

Ground fixing:

The mounting foot is supplied with closed holes for anchoring to the ground. To open them pierce the plastic membrane (see drawing).

Special requests:

- Upon request and for special quantities inserts can be supplied with customised lengths.
- Upon request and for special quantities the foot can be supplied in Orange (RAL 2004).



Stock availability as % (🛒)

90% (●) - 40% (●) - 5% (●)

Version P902: Mounting foot with stem type A (with hexagonal base) and ball R15

Art.	D	H	I	H1	h	A	E	s	d2	R	d1 _{6g}	Q	g	F1 (kN)
P902080.TM12X..01	80	20	54	25.5	16	20	16	6.5	9	15	M12	50-70-90-110	117-130-143-156	13
P902080.TM14X..01	80	20	54	25.5	16	20	16	6.5	9	15	M14	50-70-90-110-150	126-145-163-181-217	13
P902080.TM16X..01	80	20	54	25.5	16	20	16	6.5	9	15	M16	50-70-90-110-130-150-170-190	139-166-193-220-247-274-301-328	13
P902105.TM12X..01	105	22	74	28	18.5	21	16	6.5	11	15	M12	50-70-90-110	167-180-193-206	15
P902105.TM14X..01	105	22	74	28	18.5	21	16	6.5	11	15	M14	50-70-90-110-150	176-195-213-231-268	15
P902105.TM16X..01	105	22	74	28	18.5	21	16	6.5	11	15	M16	50-70-90-110-130-150-170-190	189-216-243-270-297-324-351-378	15
P902130.TM12X..01	130	24	99	30	20	21	16	6.5	13	15	M12	50-70-90-110	234-247-260-273	17
P902130.TM14X..01	130	24	99	30	20	21	16	6.5	13	15	M14	50-70-90-110-150	244-263-281-299-335	17
P902130.TM16X..01	130	24	99	30	20	21	16	6.5	13	15	M16	50-70-90-110-130-150-170-190	256-283-310-337-364-391-418-445	17

Version P902CIN: Mounting foot with stem type A - stainless steel - (with hexagonal base) and ball R15



Art.	D	H	I	H1	h	A	E	s	d2	R	d1 _{6g}	Q	g	F1 (kN)
P902080.TM12X..01CIN	80	20	54	25.5	16	20	16	6.5	9	15	M12	70-90-110	130-143-156	13
P902080.TM14X..01CIN	80	20	54	25.5	16	20	16	6.5	9	15	M14	70-110-130	145-163-181	13
P902080.TM16X..01CIN	80	20	54	25.5	16	20	16	6.5	9	15	M16	50-70-90-110-130-150-170-190	139-166-193-220-247-274-301-328	13
P902105.TM12X..01CIN	105	22	74	28	18.5	21	16	6.5	11	15	M12	70-90-110	180-193-206	15
P902105.TM14X..01CIN	105	22	74	28	18.5	21	16	6.5	11	15	M14	70-110-130	195-231-249	15
P902105.TM16X..01CIN	105	22	74	28	18.5	21	16	6.5	11	15	M16	50-70-90-110-130-150-170-190	189-216-243-270-297-324-351-378	15
P902130.TM12X..01CIN	130	24	99	30	20	21	16	6.5	13	15	M12	70-90-110	247-260-273	17
P902130.TM14X..01CIN	130	24	99	30	20	21	16	6.5	13	15	M14	70-110-130	263-299-317	17
P902130.TM16X..01CIN	130	24	99	30	20	21	16	6.5	13	15	M16	50-70-90-110-130-150-170-190	256-283-310-337-364-391-418-445	17

Enter the selected stud length in place of the two dots . . in the item code. Customised stud length available for a minimum of 100 pieces.

Attention: The expressed load limit F1 is lower than the break load by 30% and is intended as static.



Arbel Agencies LTD.

11 Ba'alei Hamelacha st. Qiryat Bialik P.O.B 1095, ZIP 2751311, ISRAEL

+972(0)48736969 ☎ +972(0)48730708 📠 info@arbel-ltd.com 📧 www.arbel-ltd.com 🌐

