

O530

BASIC VERTICAL LIFT-OFF HINGE



Materials:

(1-2) Die-cast zamak alloy (zinc, aluminium and copper alloy).

Surface finish:

Colour:

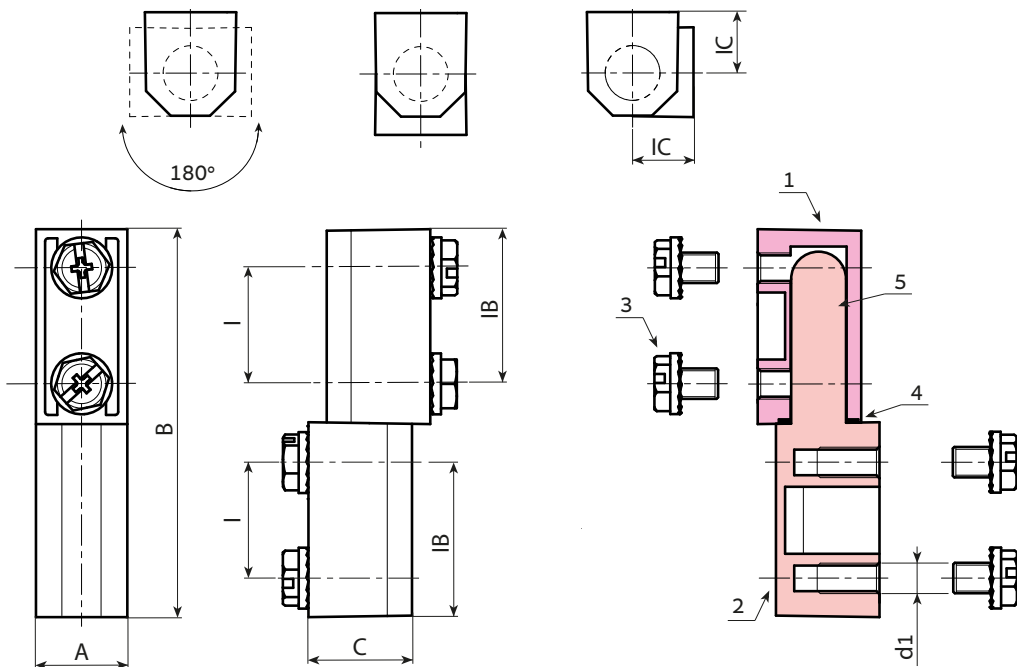
(01) Black epoxy powder coated (RAL 9011).
(Z) Standard blue galvanising.

Inserts:

(3) 4 galvanised steel screws M05x06 with toothed lock washer.
(4) Black oxide treated spacer washer.
(5) Die-cast zamak pivot pin.

Special Requests:

- Upon request and for special quantities (minimum 100 pieces) the hinge can be supplied with a stainless steel pivot pin (Aisi 304) (code O530019.ZM0501CIN).



Black coated version code 01 ending

🛒	Art.	I	IB	IC	A	B	C	d1	📦
●	O530019.ZM0501	19	25,5	10	15	64,5	17	M5	86

Stock availability as % (🛒)
90% (●) -40% (●) -5% (●)

Galvanised version code Z ending

🛒	Art.	I	IB	IC	A	B	C	d1	📦
●	O530019.ZM05Z	19	25,5	10	15	64,5	17	M5	86



Arbel Agencies LTD.
11 Ba'alei Hamelacha st. Qiryat Bialik P.O.B 1095, ZIP 2751311, ISRAEL
+972(0)48736969 ☎ +972(0)48730708 📠 info@arbel-ltd.com 📧 www.arbel-ltd.com 🌐

