

# O500



## REMOVABLE FLAT ZAMAK HINGE WITH THREADED STUD

### Materials:

(1) Die-cast zamak alloy (zinc, aluminium and copper alloy).

### Surface finish:

#### Colour:

(01) Black epoxy powder coated (RAL 9011).

(Z) Standard blue galvanising.

#### Inserts:

(2) Galvanised steel threaded stud (thread tolerance 6g).

(3) Stainless steel hinge pivot pin (Aisi 304).

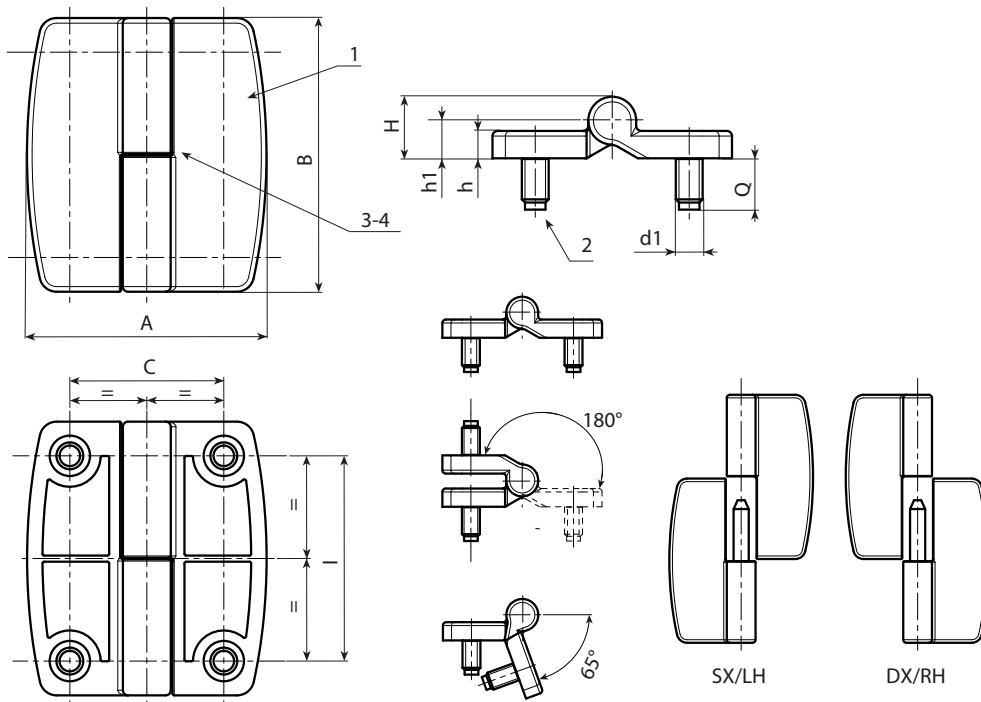
(4) Stainless steel separating washer (Aisi 304) inserted between the two knuckles.

#### Assembly:

The hinge can be supplied for mounting doors that swing open to the right (DX/RH – enter the letter D at the end of the code); or for doors that swing open to the left (SX/LH – enter the letter S at the end of the code).

#### Special Requests:

- None.



Black coated version code 01, final letter S at the end for Left version – final letter D for door opening to the right.

Stock availability as % (🛒)  
90% (●) -40% (●) -5% (●)

🛒	Art.	C	I	A	B	h	H	h1	d16g	Q	🔒
●	O500045.ZM08X1401D	45	60	70	80	8	18	11	M8	15	281
●	O500045.ZM08X1401S	45	60	70	80	8	18	11	M8	15	281

Galvanised version code Z, final letter S at the end for Left version – final letter D for door opening to the right.

🛒	Art.	C	I	A	B	h	H	h1	d16g	Q	🔒
●	O500045.ZM08X14ZD	45	60	70	80	8	18	11	M8	15	281
●	O500045.ZM08X14ZS	45	60	70	80	8	18	11	M8	15	281

Arbel Agencies LTD.



11 Ba'alei Hamelacha st. Qiryat Bialik P.O.B 1095, ZIP 2751311, ISRAEL  
+972(0)48736969 ☎ +972(0)48730708 📠 info@arbel-ltd.com 📧 www.arbel-ltd.com 🌐

