

# O410

## SHIM FOR HINGE O400



**Materials:**

Reinforced polyamide.  
Resistant to oils and greases.

**Surface finish:**

Satin.

**Colour:**

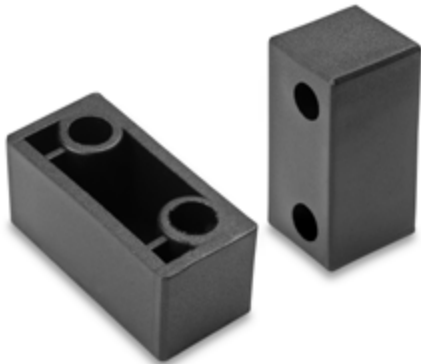
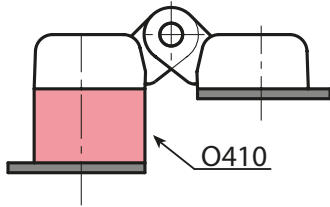
Black (RAL 9011).

**Hole:**

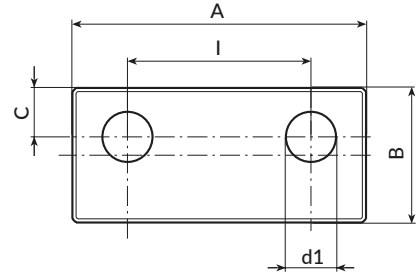
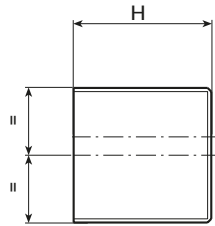
Through hole obtained by moulding the plastic.

**Special Requests:**

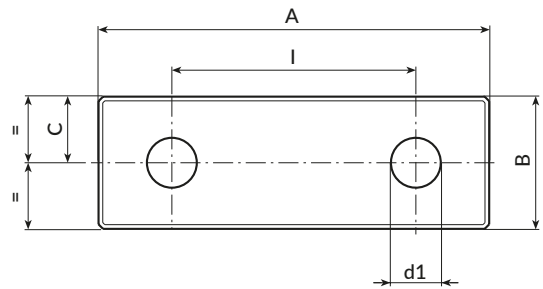
- Upon request and for special quantities available in the colours indicated in the chart [page ].



O410-30



O41030



O41040

Stock availability as % (🛒)  
90% (●) - 40% (●) - 5% (●)

🛒	art.	I	C	A	B	H	d1	🛒
●	O41030.TG08.501	30	8	48	22	22.5	8.5	19
●	O41040.TG08.501	40	11	65	22	22.5	8.5	24