

# N777



## 4-LOBE CONTROL KNOB WITH SMOOTH BORE INSERT

### Materials:

Reinforced polyamide.  
Resistant to oils and greases.

### Surface finish:

Satin.

### Colour:

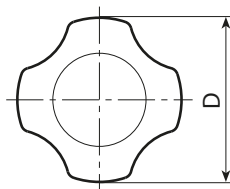
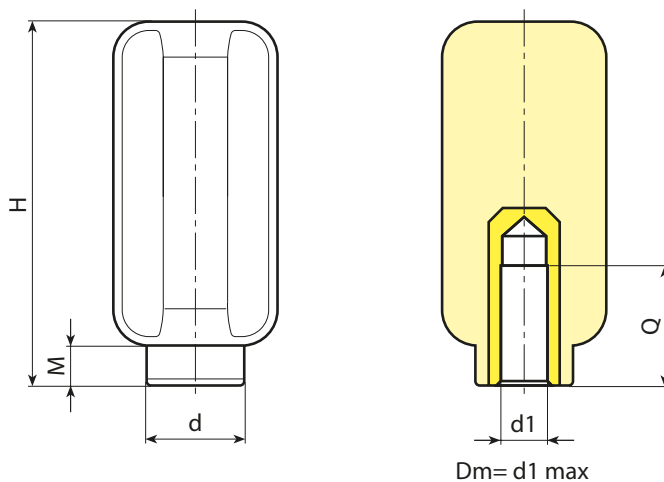
Black (RAL 9011).

### Inserts:

Galvanised steel insert with blind smooth bore (bore tolerance H10).

### Special requests:

- Upon request and for special quantities inserts can be supplied with custom hole diameter d1.
- Upon request and for special quantities inserts can be supplied in different materials/with different coatings.



Stock availability as % (🛒)  
90% (●) - 40% (●) - 5% (●)

🛒	Art.	D	H	M	d	Dm	d1 <sub>H10</sub>	Q	🛒
●	N77738.TD0801	37	81	9	22	12	8	19	108
●	N77738.TD1201	37	81	9	22	12	12	19	130

Attention: For a minimum of 100 pieces the diameter d1 can be produced with the requested diameter with H10 tolerance.  
Dm = Maximum obtainable diameter for subsequent machining (widening).