

60PP Series

3/8" Flow Size - Advanced Plastic Latch

Strong, Reliable, High Flow Couplings

Nordson MEDICAL's LinkTech line of 60PP quick connect couplings are produced from medical grade, gamma sterilizable polypropylene. These cost efficient high flow couplings offer a larger, more robust thumb-latch and greater chemical resistance. They are available with internal shut-off valves or straight through designs. They are intuitive to use and make an audible "click" when coupled. These couplings are available in a standard Modern Cool Grey color. The 60PP Series couplings interconnect with all other 60 Series couplings as well as other similar industry thumb-latch type high flow couplings.



Features & Benefits

- Advanced plastic thumb-latch couplings available with hose barb and threaded terminations
- Offer greater chemical resistance
- Large, robust thumb latch for easy use
- Strong, panel-mount designs
- Available with internal shut-off valves or straight-through designs
- Interconnect with each other and with similar industry thumb-latch high flow couplings

Specifications

- **Materials:**
 - Bodies & Terminations: Medical Grade Polypropylene
 - Internal Valves: Medical Grade Polypropylene
 - Internal Valve Springs: 316 Stainless Steel
 - Latch Spring: Stainless Steel
 - O-rings: Peroxide-cured EPDM (others available)
 - Thumb-latch: Medical Grade Polypropylene
- **Performance Ratings:**
 - Operating Pressure: Vacuum to 60psi; (4.2bar)
 - Temperature: 32°F to 160°F; (0°C to 71°C)
 - Flow Capacity: 3/8" (9.5 mm)
 - Fits Tubing IDs: 1/4" (6.4 mm) - 3/4" (19.0 mm)

60PP Series

3/8" Flow Size - Advanced Plastic Latch

Part Style

Part Image

Open Flow Straight

1/4" (6.4 mm) tube ID
3/8" (9.5 mm) tube ID & threaded
1/2" (12.7 mm) tube ID & threaded
3/4" (19.0 mm) tube ID & threaded
Female and Male



Open Flow Panel Mount

1/4" (6.4 mm) tube ID
3/8" (9.5 mm) tube ID
1/2" (12.7 mm) tube ID
3/4" (19.0 mm) tube ID
Female and Male



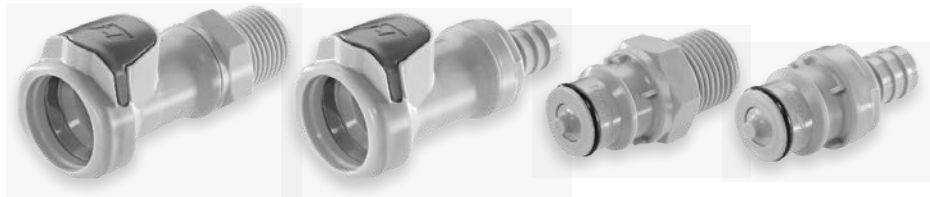
Open Flow Elbow

3/8" (9.5 mm) tube ID
1/2" (12.7 mm) tube ID
Male ONLY



Valved Straight

1/4" (6.4 mm) tube ID
3/8" (9.5 mm) tube ID & threaded
1/2" (12.7 mm) tube ID & threaded
3/4" (19.0 mm) tube ID & threaded
Female and Male



Valved Panel Mount

1/4" (6.4 mm) tube ID
3/8" (9.5 mm) tube ID
1/2" (12.7 mm) tube ID
3/4" (19.0 mm) tube ID
Female and Male



Valved Elbow

3/8" (9.5 mm) tube ID
1/2" (12.7 mm) tube ID
Male ONLY



MAR-60PP-DS-01

60PP-BLK Series

3/8" Flow Size - Advanced Plastic Latch

UV Radiation-Resistant Black-Out Couplings

Nordson MEDICAL's LinkTech line of 60PP-BLK quick connect couplings are produced from medical grade, gamma sterilizable, UV-resistant polypropylene. These cost efficient high flow couplings offer a larger, more robust thumb-latch and greater chemical resistance. They are available with internal shut-off valves or straight through designs. They are intuitive to use and make an audible "click" when coupled. These couplings are available in a UV-resistant black-out color. The solid "black-out" color allows the ability to color key applications, as well as makes these couplings significantly more resistant to UV radiation due to its already advanced raw material capabilities. The 60PP-BLK Series couplings interconnect with all other 60 Series couplings as well as other similar industry thumb-latch type high flow couplings.



Features & Benefits

- Advanced plastic thumb-latch couplings available with hose barb and threaded terminations
- Offer greater chemical resistance
- "Black-out" color option for UV resistance
- Large, robust thumb latch for easy use
- Strong, panel-mount designs
- Available with internal shut-off valves or straight-through designs
- Interconnect with each other and with similar industry thumb-latch high flow couplings

Specifications

- **Materials:**
 - Bodies & Terminations: UV Resistant Medical Grade Polypropylene
 - Internal Valves: UV Resistant Medical Grade Polypropylene
 - Internal Valve Springs: 316 Stainless Steel
 - Latch Spring: Stainless Steel
 - O-rings: Peroxide-cured EPDM (others available)
 - Thumb-latch: UV Resistant Medical Grade Polypropylene

Performance Ratings:

- Operating Pressure: Vacuum to 60psi; (4.2bar)
- Temperature: 32°F to 160°F; (0°C to 71°C)
- Flow Capacity: 3/8" (9.5 mm)
- Fits Tubing IDs: 1/4" (6.4 mm) - 3/4" (19.0 mm)

60PP-BLK Series

3/8" Flow Size - Advanced Plastic Latch

Part Style

Part Image

Open Flow Straight

1/4" (6.4 mm) tube ID
3/8" (9.5 mm) tube ID & threaded
1/2" (12.7 mm) tube ID & threaded
3/4" (19.0 mm) tube ID & threaded
Female and Male



Open Flow Panel Mount

1/4" (6.4 mm) tube ID
3/8" (9.5 mm) tube ID
1/2" (12.7 mm) tube ID
3/4" (19.0 mm) tube ID
Female and Male



Valved Straight

1/4" (6.4 mm) tube ID
3/8" (9.5 mm) tube ID & threaded
1/2" (12.7 mm) tube ID & threaded
3/4" (19.0 mm) tube ID & threaded
Female and Male



Valved Panel Mount

1/4" (6.4 mm) tube ID
3/8" (9.5 mm) tube ID
1/2" (12.7 mm) tube ID
3/4" (19.0 mm) tube ID
Female and Male



Valved Elbow

3/8" (9.5 mm) tube ID
1/2" (12.7 mm) tube ID
Male ONLY



MAR-60PP-BLK-DS-01

60PS Series

3/8" Flow Size - Advanced Plastic Latch

Improved Reliable Design, Easier and Faster to Use

Nordson MEDICAL's LinkTech line of 60PS quick connect couplings are produced in high performance thermoplastic Food Grade Udel® Polysulfone material. These high flow couplings are more durable and stable at higher temperatures. They are available with internal shut-off valves or straight through designs. They are intuitive to use and make an audible "click" when coupled. The 60PS Series couplings offer an improved Panel MOUNT design that has a more reliable thumb-latch which makes it more durable, easier and faster to use. All 60PS Series couplings interconnect with all other 60 Series couplings as well as other similar industry thumb-latch type high flow couplings.



Features & Benefits

- Advanced plastic thumb-latch couplings available with hose barb and threaded terminations
- Stable at higher temperatures
- Large, robust thumb latch for easy use
- Strong, panel-mount designs
- Available with internal shut-off valves or straight-through designs
- Interconnect with each other and with similar industry thumb-latch high flow couplings

Specifications

- **Materials:**
 - Bodies & Terminations: Food Grade Udel® Polysulfone
 - Internal Valves: Food Grade Udel® Polysulfone
 - Internal Valve Springs: 316 Stainless Steel
 - Latch Spring: Stainless Steel
 - O-rings: Peroxide-cured EPDM (others available)
 - Thumb-latch: Food Grade Udel® Polysulfone
- **Performance Ratings:**
 - Operating Pressure: Vacuum to 125psi; (8.6bar)
 - Temperature: 32°F to 160°F; (0°C to 71°C)
 - Flow Capacity: 3/8" (9.5 mm)
 - Fits Tubing IDs: 1/4" (6.4 mm) - 3/4" (19.0 mm)

60PS Series

3/8" Flow Size - Advanced Plastic Latch

Part Style

Part Image

Open Flow Straight

3/8" (9.5 mm) tube ID & threaded
1/2" (12.7 mm) tube ID & threaded
3/4" (19.0 mm) tube ID
Female and Male



Open Flow Panel Mount

3/8" (9.5 mm) tube ID
1/2" (12.7 mm) tube ID
3/4" (19.0 mm) tube ID
Female and Male



Open Flow Elbow

3/8" (9.5 mm) tube ID
1/2" (12.7 mm) tube ID
Male ONLY



Valved Straight

3/8" (9.5 mm) tube ID & threaded
1/2" (12.7 mm) tube ID & threaded
3/4" (19.0 mm) tube ID
Female and Male



Valved Panel Mount

3/8" (9.5 mm) tube ID
1/2" (12.7 mm) tube ID
3/4" (19.0 mm) tube ID
Female and Male



Valved Elbow

3/8" (9.5 mm) tube ID
1/2" (12.7 mm) tube ID
Male ONLY



MAR-60PS-DS-01

60PS-BLK Series

3/8" Flow Size - Advanced Plastic Latch

High-Temp Stable, UV Resistant Thumb-Latch Couplings

Nordson MEDICAL's LinkTech line of 60PS-BLK quick connect couplings are produced in high performance thermoplastic UV-Resistant Udel® Polysulfone material. The solid "black-out" color allows these high flow couplings the ability to color key applications and provides a greater UV radiation resistance than 60PS-White couplings, in addition to their inherent stability at high temperatures. They are available with internal shut-off valves or straight through designs. They are intuitive to use and make an audible "click" when coupled. The 60PS-BLK Series couplings offer an improved Panel Mount design that has a more reliable thumb-latch which makes it more durable, easier and faster to use. All 60PS-BLK Series couplings interconnect with all other 60 Series couplings as well as other similar industry thumb-latch type high flow couplings.



Features & Benefits

- Advanced plastic thumb-latch couplings available with hose barb and threaded terminations
- Stable at higher temperatures
- "Black-out" color option for UV resistance
- Large, robust thumb latch for easy use
- Strong, panel-mount designs
- Available with internal shut-off valves or straight-through designs
- Interconnect with each other and with similar industry thumb-latch high flow couplings

Specifications

- **Materials:**
 - Bodies & Terminations: UV-Resistant Udel® Polysulfone
 - Internal Valves: UV-Resistant Udel® Polysulfone
 - Internal Valve Springs: 316 Stainless Steel
 - Latch Spring: Stainless Steel
 - O-rings: Peroxide-cured EPDM (others available)
 - Thumb-latch: UV-Resistant Udel® Polysulfone
- **Performance Ratings:**
 - Operating Pressure: Vacuum to 125psi; (8.6bar)
 - Temperature: 32°F to 160°F; (0°C to 71°C)
 - Flow Capacity: 3/8" (9.5 mm)
 - Fits Tubing IDs: 1/4" (6.4 mm) - 3/4" (19.0 mm)

60PS-BLK Series

3/8" Flow Size - Advanced Plastic Latch

Part Style

Part Image

Open Flow Straight

3/8" (9.5 mm) tube ID & threaded
1/2" (12.7 mm) tube ID & threaded
3/4" (19.0 mm) tube ID
Female and Male



Open Flow Panel Mount

3/8" (9.5 mm) tube ID
1/2" (12.7 mm) tube ID
3/4" (19.0 mm) tube ID
Female and Male



Valved Panel Mount

3/8" (9.5 mm) tube ID
1/2" (12.7 mm) tube ID
3/4" (19.0 mm) tube ID
Female and Male



MAR-60PS-BLK-DS-01