

L756

LARGE WING NUT WITH THREADED STUD



Materials:

Reinforced polyamide.
Resistant to oils and greases.

Surface finish:

Satin.

Colour:

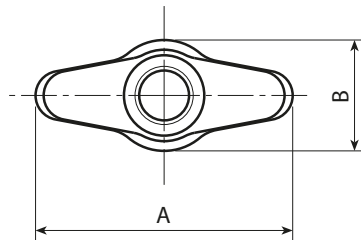
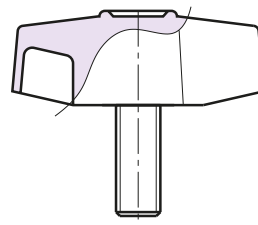
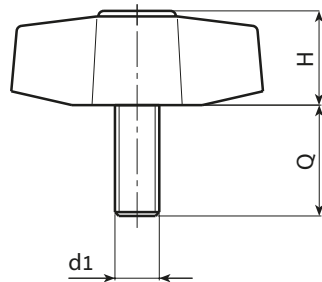
Black (RAL 9011).

Inserts:

Galvanised steel threaded stud (thread tolerance 6g).

Special Requests:

- Upon request and for special quantities inserts can be supplied with customised lengths.
- Upon request and for special quantities inserts can be supplied in different materials.
- Upon request and for special quantities available in the colours indicated in the chart [page].



Stock availability as % (🛒)
90% (●) - 40% (●) - 5% (●)

Art.	A	B	H	LM	d1 _{6g}	Q	🛒
L75648.TM06X..01	45	20	17	50	M6	16-20	14,5-15
L75648.TM08X..01	45	20	17	50	M8	16-20-25-30-35-50	17-18,5-20-21,5-23-26
L75648.TM10X..01	45	20	17	50	M10	20-25-30	26-28,5-30

Enter the selected stud length in place of the two dots . . in the item code. Customised stud length available for a minimum of 150 pieces.

LM = Maximum mouldable length.