

# L751

## WING NUT WITH THREADED STUD



### Materials:

Reinforced polyamide.  
Resistant to oils and greases.

### Surface finish:

Satin.

### Colour:

Black (RAL 9011).

### Inserts:

#### L751:

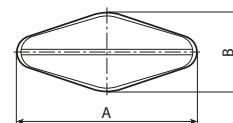
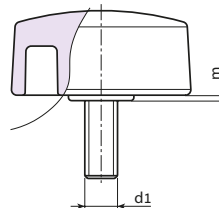
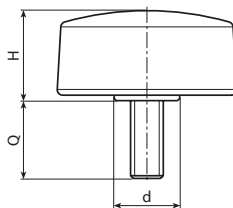
Galvanised steel threaded stud (thread tolerance 6g).

#### L751CIN:

Stainless steel threaded stud (Aisi 303) (thread tolerance 6g).

### Special Requests:

- Upon request and for special quantities inserts can be supplied with customised lengths.
- Upon request and for special quantities inserts can be supplied in different materials.
- Upon request and for special quantities available in the colours indicated in the chart (attention: reduced range) [page ].



### Version L751: with threaded stud in galvanised steel.

Stock availability as % (🛒)  
90% (●) - 40% (●) - 5% (●)

Art.	A	B	H	m	d	LM	d1 <sub>6g</sub>	Q	g
L75132.TM05X..01	33	15	16.5	1	12	60	M5	16-25-30-40	8-9-11-15
L75132.TM06X..01	33	15	16.5	1	12	60	M6	10-16-20-25-30-40	9-11-12-12-12,5-15,5
L75132.TM08X..01	33	15	16.5	1	12	60	M8	10-16-20-25-30-40	13,5-14,5-16-17,5-19-22
L75148.TM06X..01	48	15	16	1	12.5	70	M6	10-16-20	13-15-16-17
L75148.TM08X..01	48	15	16	1	12.5	70	M8	16-20-25-30-40	18-20-21,5-23-27

Enter the selected stud length in place of the two dots . . in the item code.

A.R. = Upon request, for a minimum of 150 pieces.

LM = Maximum mouldable length.

### Version L751 CIN - stainless steel insert (Aisi 303).

INOX

Art.	A	B	H	m	d	LM	d1 <sub>6g</sub>	Q	g
L75132.TM05X..01CIN	33	15	16.5	1	12	60	M5	A.R.	-
L75132.TM06X..01CIN	33	15	16.5	1	12	60	M6	11-16-30	11-13-17
L75132.TM08X1601CIN	33	15	16.5	1	12	60	M8	16	15
L75148.TM06X..01CIN	48	15	16	1	12.5	70	M6	A.R.	-
L75148.TM08X..01CIN	48	15	16	1	12.5	70	M8	A.R.	-

Enter the selected stud length in place of the two dots . . in the item code.

A.R. = Upon request, for a minimum of 250 pieces.

LM = Maximum mouldable length.