

# L750

## WING NUT WITH INSERT AND FEMALE THREADED HOLE



### Materials:

Reinforced polyamide.  
Resistant to oils and greases.

### Surface finish:

Satin.

### Colour:

Black (RAL 9011).

### Inserts:

#### L750:

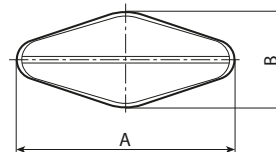
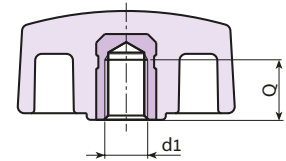
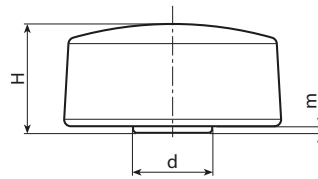
Brass insert with female threaded hole (thread tolerance 6H).

#### L750CIN:

Stainless steel insert with female threaded hole (Aisi 303) (thread tolerance 6H).

### Special Requests:

- Upon request and for special quantities available in the colours indicated in the chart [page ].



### Version L750: brass insert.

Stock availability as % (🛒)  
90% (●) -40% (●) -5% (●)

Art.	A	B	H	m	d	d1 <sub>6H</sub>	Q	🔒
L75032.TM0501	33	15	16.5	1	12	M5	7	7
L75032.TM0601	33	15	16.5	1	12	M6	7	6
L75032.TM0801	33	15	16.5	1	12	M8	7	6
L75048.TM0601	48	15	16	1	12.5	M6	7	10
L75048.TM0801	48	15	16	1	12.5	M8	7	10

### Version L750CIN: stainless steel insert (Aisi 303).

INOX

Art.	A	B	H	m	d	d1 <sub>6H</sub>	Q	🔒
L75032.TM0501CIN	33	15	16.5	1	12	M5	7	9
L75032.TM0601CIN	33	15	16.5	1	12	M6	7	8
L75032.TM0801CIN	33	15	16.5	1	12	M8	7	8
L75048.TM0801CIN	48	15	16	1	12.5	M8	7	8