

# L271



## T-HANDLE WITH THREADED STUD

### Materials:

Reinforced polyamide.  
Resistant to oils and greases.

### Surface finish:

Satin.

### Colour:

Black (RAL 9011).

### Inserts:

#### L271:

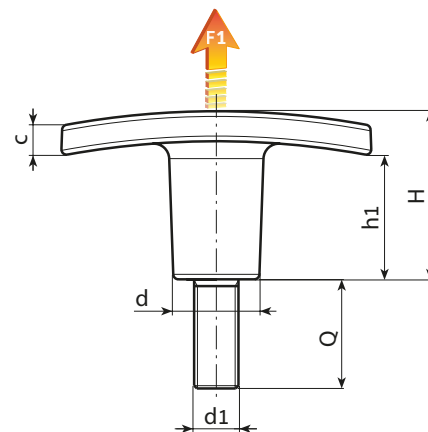
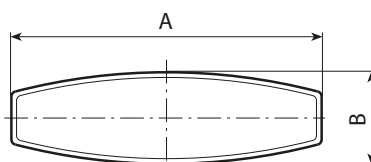
Galvanised steel threaded stud (thread tolerance 6g).

#### L271CIN:

Stainless steel threaded stud. (Aisi 303), (thread tolerance 6g).

### Special Requests:

- Upon request and for special quantities inserts can be supplied with customised lengths.
- Upon request and for special quantities inserts can be supplied in different materials.
- Upon request and for special quantities available in the colours indicated in the chart (attention: reduced range) [page ].



### Version L271: with galvanised steel insert.

Stock availability as % (🛒)  
90% (●) - 40% (●) - 5% (●)

Art.	A	B	H	h1	c	d	LM	d1 <sub>6g</sub>	Q	g	F1 (N)
L27150.TM05X..01	50	15	24	17	5	14	30	M5	20-30	13-14	4100
L27150.TM06X..01	50	15	24	17	5	14	30	M6	15-20-30-40	14,5-15-16,5-18	4100
L27160.TM05X..01	60	18	33	24	6	16.5	30	M5	15-20-30	20-21	4100
L27160.TM06X..01	60	18	33	24	6	16.5	30	M6	20-30	23-25	5800
L27160.TM08X..01	60	18	33	24	6	16.5	30	M8	20-30-40	28-31-34	5800
L27160.TM10X..01	60	18	33	24	6	16.5	30	M10	20-30-40	30-35	5800
L27172.TM06X..01	72	19	34	20	10	18	80	M6	20-30-40	30-32-34	6500
L27172.TM08X..01	72	19	34	20	10	18	80	M8	20-30-40	39-42-45	6500
L27172.TM10X..01	72	19	34	20	10	18	80	M10	30-40	56-61	6500
L27172.TM12X..01	72	19	34	20	10	18	80	M12	30-40-50	58-64-71	6500

Enter the selected stud length in place of the two dots . . in the item code. Customised stud length available for a minimum of 250 pieces.

LM = Maximum mouldable length.

### Version L271CIN: with stainless steel insert (Aisi 303).



Art.	A	B	H	h1	c	d	LM	d1 <sub>6g</sub>	Q	g	F1 (N)
L27150.TM05X..01CIN	50	15	24	17	5	14	30	M5	A.R.	-	4100
L27150.TM06X..01CIN	50	15	24	17	5	14	30	M6	A.R.	-	4100
L27160.TM06X..01CIN	60	18	33	24	6	16.5	30	M6	A.R.	-	5800
L27160.TM08X..01CIN	60	18	33	24	6	16.5	30	M8	A.R.	-	5800
L27172.TM08X..01CIN	72	19	34	20	10	18	80	M8	A.R.	-	6500
L27172.TM10X..01CIN	72	19	34	20	10	18	80	M10	A.R.	-	6500
L27172.TM12X..01CIN	72	19	34	20	10	18	80	M12	A.R.	-	6500

Enter the selected stud length in place of the two dots . . in the item code.

A.R. = Upon request, for a minimum of 300 pieces.

LM = Maximum mouldable length.