

L270CIN

T-HANDLE WITH STAINLESS STEEL THREADED INSERT



INOX

Materials:

Reinforced polyamide.
Resistant to oils and greases.

Surface finish:

Satin.

Colour:

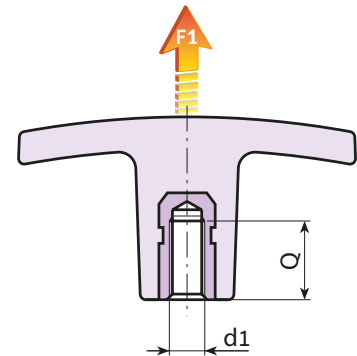
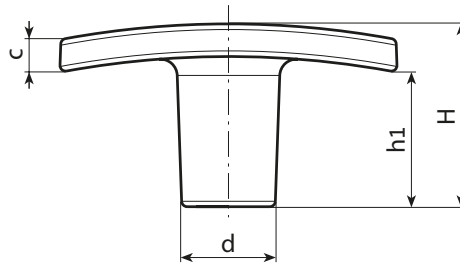
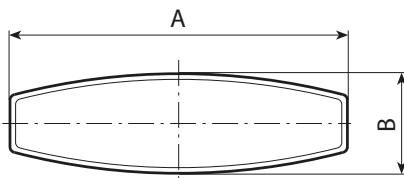
Black (RAL 9011).

Inserts:

Stainless steel insert with female threaded hole (Aisi 303)
(thread tolerance 6H).

Special Requests:

- Upon request and for special quantities available in the colours indicated in the chart [page].



Stock availability as % (🛒)
90% (●) - 40% (●) - 5% (●)

Art.	A	B	H	h1	c	d	d1 ^{6H}	Q	📦	F1 (N)
L27050.TM0501CIN	50	15	24	17	5	14	M5	9	14	4100
L27050.TM0601CIN	50	15	24	17	5	14	M6	9	14	4100
L27050.TM0801CIN	50	15	24	17	5	14	M8	12	16	4100
L27060.TM0601CIN	60	18	33	24	6	16.5	M6	9	20	5800
L27060.TM0801CIN	60	18	33	24	6	16.5	M8	12	21	5800
L27060.TM1001CIN	60	18	33	24	6	16.5	M10	18	24	5800
L27072.TM0801CIN	72	19	34	20	10	18	M8	19	32	6500
L27072.TM1001CIN	72	19	34	20	10	18	M10	18	33	6500
L27072.TM1201CIN	72	19	34	20	10	18	M12	15	34	6500