

L270



T-HANDLE WITH THREADED INSERT

Materials:

Reinforced polyamide.
Resistant to oils and greases.

Surface finish:

Satin.

Colour:

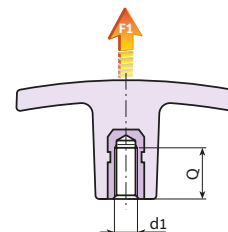
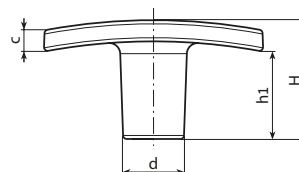
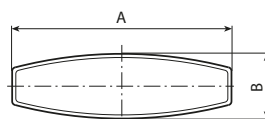
Black: (RAL 9011 code 01).
Orange: (RAL 2004 code 02).
Red: (RAL 3000 code 16).

Inserts:

Brass insert with female threaded hole (thread tolerance 6H).

Special Requests:

- Upon request and for special quantities inserts can be supplied in different materials.
- Upon request and for special quantities available in the colours indicated in the chart [page].



Version L270 - 01 Black T-handle (RAL 9001 code 01)

Stock availability as % (🛒)
90% (●) - 40% (●) - 5% (●)

Art.	A	B	H	h1	c	d	d1 _{6H}	Q	📦	F1 (N)
L27050.TM0501	50	15	24	17	5	14	M5	12	13	4100
L27050.TM0601	50	15	24	17	5	14	M6	10	11	4100
L27050.TM0801	50	15	24	17	5	14	M8	14	12	4100
L27060.TM0501	60	18	33	24	6	16.5	M5	12	19	5800
L27060.TM0601	60	18	33	24	6	16.5	M6	10	16.5	5800
L27060.TM0801	60	18	33	24	6	16.5	M8	14	17.5	5800
L27060.TM1001	60	18	33	24	6	16.5	M10	21	21	5800
L27072.TM0601	72	19	34	20	10	18	M6	15	25	6500
L27072.TM0801	72	19	34	20	10	18	M8	20	28	6500
L27072.TM1001	72	19	34	20	10	18	M10	21	30	6500
L27072.TM1201	72	19	34	20	10	18	M12	17	30	6500

Version L270 - 02 Orange T-handle (RAL 2004 code 02)

Art.	A	B	H	h1	c	d	d1 _{6H}	Q	📦	F1 (N)
L27050.TM0602	50	15	24	17	5	14	M6	10	11	4100
L27060.TM0802	60	18	33	24	6	16.5	M8	14	17.5	5800
L27072.TM1002	72	19	34	20	10	18	M10	21	30	6500

Version L270 - 16 Red T-handle (RAL 3000 code 16)

Art.	A	B	H	h1	c	d	d1 _{6H}	Q	📦	F1 (N)
L27050.TM0516	50	15	24	17	5	14	M5	12	13	4100
L27050.TM0616	50	15	24	17	5	14	M6	10	11	4100
L27060.TM0816	60	18	33	24	6	16.5	M8	14	17.5	5800
L27072.TM1016	72	19	34	20	10	18	M10	21	30	6500