

K630

NEW



PA6

PPMA

UL94 HB



5-DIGIT NUMERATOR BLOCK - WITH INCREASED BORE FOR SHAFT

Materials:

(1-2) Numerator case:

Glass fiber reinforced polyamide.
Resistant to oils and greases.

(3) Grub screw:

K630: Steel C45
K630CIN: Stainless steel (Aisi 304).

(4) Shaft connector:

K630: Free-cutting steel.
K630CIN: Stainless steel (Aisi 303).

(4) Window:

Polymethylmethacrylate (PMMA).

(4) Number wheels:

Polyamide.

Surface finish:

(1-2-6) Smooth.
(4) Fine turned finish.
(5) Glossy, enhanced reading effect.

Number wheel characters:

White pad printed. Character height 7 mm approx.

Gear ratio (GR):

The gear ratio establishes which number must appear on the counter after making a full turn (360°). For example, by choosing a gear ratio of 15, after one revolution on the window you will see digits 015. The position of the decimal point will help reduce the measure, because, choosing one decimal place, the 015 becomes 01.5.

Mounting / reading position (PL):

The numerator block can be applied in four different positions. Please choose the most suitable for your application:

P1 = Vertical, with numbers on upper side
P2 = Vertical, with numbers on vertical side
P3 = Horizontal, with numbers on inclined side
P4 = Horizontal, with numbers on vertical side.

Rotation direction (SR):

O = increase of values with clockwise rotation
A = increase of values with counter clockwise rotation

Decimal point (PD):

The numerator block can also be chosen with decimal point. In this case, with three digits, the decimal position is available in these formats:

PD = 0 - no decimal point indicated (00000)
PD = 1 - one digit after decimal point (0000.0)
PD = 2 - two digits after decimal point (000.00)
PD = 3 - three digits after decimal point (00.000)
PD = 4 - four digits after decimal point (0.0000)

Base case seal:

Each numerator comes with a base case seal in black polyurethane foam. For additional orders use code K607075.

Special requests:

- Upon request a shaft reducing sleeve K605 can be supplied in black oxide treated steel, diameters available: 25.
- Upon request it can be supplied with the anti-rotation pin with backlash compensation.

Colour:

(1) Case cover:

Black (RAL 9011 code 01)

(2) Case:

K630: Black (RAL 9011 cod. 01).
K632: Orange (RAL 2004 cod. 02).

(3) Grub screw:

K630: Black-oxide treated.
K630CIN: Natural.

(4) Connector

K630: Black-oxide treated.
K630CIN: Natural.

(5) Window:

Transparent.

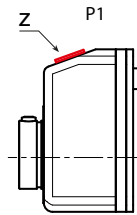
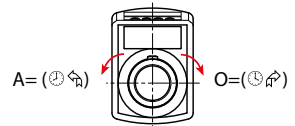
(6) Number wheels:

Black wheel with white numbers.

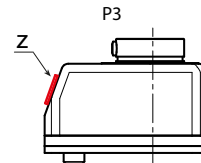
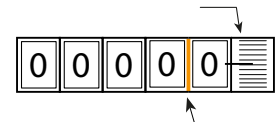
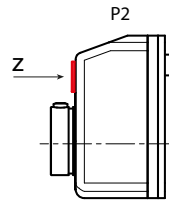


Mounting or reading position (PL)

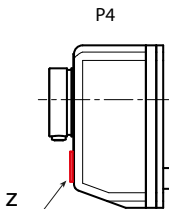
Rotation direction (SR)



5-digit numerator block, 1 decimal place



Base case seal included K60775



Reducing sleeve K605

Stock availability as % (🛒)
90% (●) - 40% (●) - 5% (●)



K630

NEW



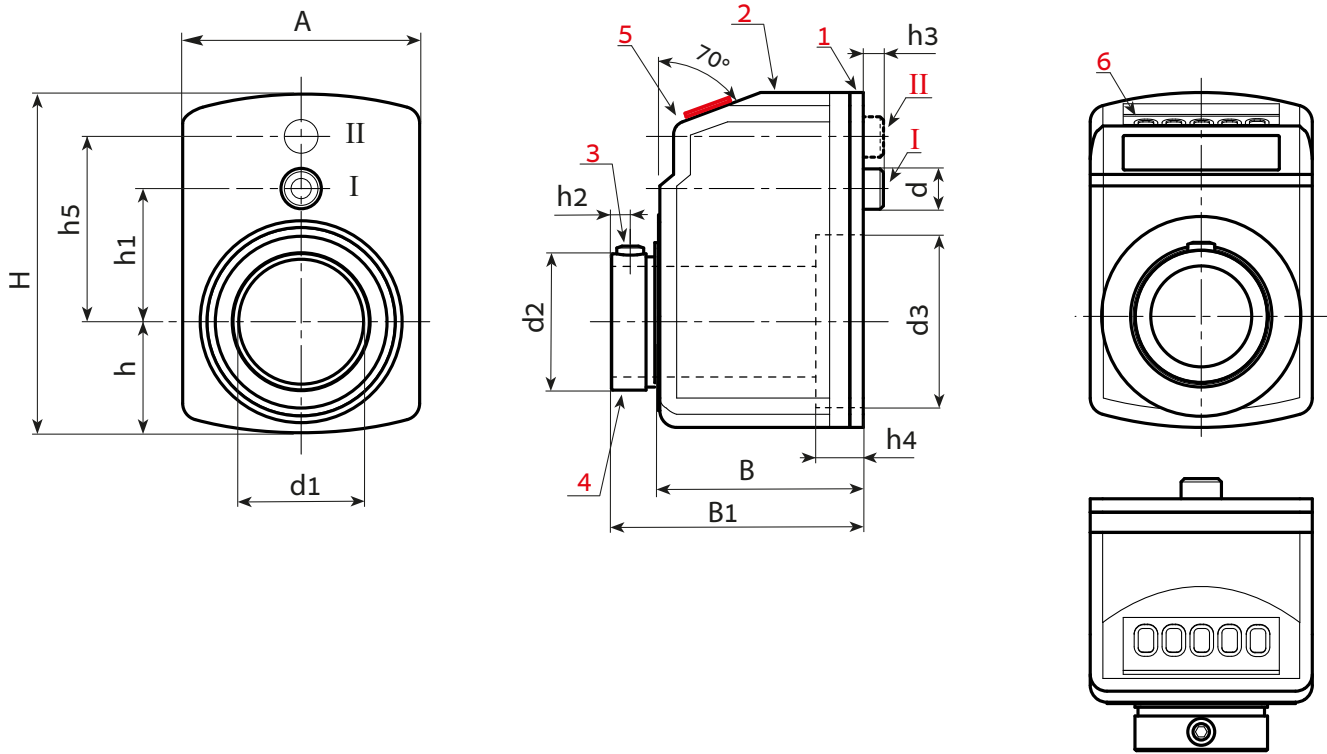
PA6

PPMA

UL94 HB

RoHS COMPLIANT

5-DIGIT NUMERATOR BLOCK - WITH INCREASED BORE FOR SHAFT



Stock availability as % (🛒)
90% (●) - 40% (●) - 5% (●)

Options to specify in the order (GR-SR-PL-PD)

art.	H	A	h	h1	h2	h3	h4	h5	B	B1	d	d2	d3	d1 H7	GR	SR	PL	PD	🛒
K630075.TD30.....	75	56	27	30	4	5	10	40	44	52	6	37	47	30	6/5 - 10 - 15 - 17/5 - 20 - 25 - 30 - 39/4 - 40 - 50 - 60 - 80 - 100	O-A	P1-P2-P3-P4	0-1-2-2-4	100
K632075.TD30.....	75	56	27	30	4	5	10	40	44	52	6	37	47	30	6/5 - 10 - 15 - 17/5 - 20 - 25 - 30 - 39/4 - 40 - 50 - 60 - 80 - 100	O-A	P1-P2-P3-P4	0-1-2-2-4	100
K630075.TD30.....CIN	75	56	27	30	4	5	10	40	44	52	6	37	47	30	6/5 - 10 - 15 - 17/5 - 20 - 25 - 30 - 39/4 - 40 - 50 - 60 - 80 - 100	O-A	P1-P2-P3-P4	0-1-2-2-4	100
K632075.TD30.....CIN	75	56	27	30	4	5	10	40	44	52	6	37	47	30	6/5 - 10 - 15 - 17/5 - 20 - 25 - 30 - 39/4 - 40 - 50 - 60 - 80 - 100	O-A	P1-P2-P3-P4	0-1-2-2-4	100

Notes: Note: For ratios "/5" the arithmetic values are not displayed.

When ordering, please insert the chosen options in the code points.

Example 1: for a numerator block with 5 digits (K630075) with shaft of 30mm (d1), - orange colour (K632), - with gear ratio (GR) 50, - with clockwise rotation (SR) O, - with reading position (PL) P2, - with four decimal places (PD) 4, the complete code is thus formed: K632075.TD30050OP24.

or

Example 2: for a numerator block with 5 digits (K630075) with stainless steel shaft of 30mm (d1), - black colour (K630), - with gear ratio (GR) 15/75, - with counterclockwise rotation (SR) A, - with reading position (PL) P3, - with four decimal places (PD) 4, the complete code is thus formed: K632075.TD301575AP34CIN.



11 Ba'alei Hamelacha st. Qiryat Bialik P.O.B 1095, ZIP 2751311, ISRAEL
+972(0)48736969 ☎ +972(0)48730708 📠 info@arbel-ltd.com 📧 www.arbel-ltd.com 🌐

