

J801

BENT WASHERS IN SHEET METAL (SPARE PART)



DD13



Materials:

Sheared and bent washer in sheet metal (DD13).

Surface finish:

Smooth.

Colour:

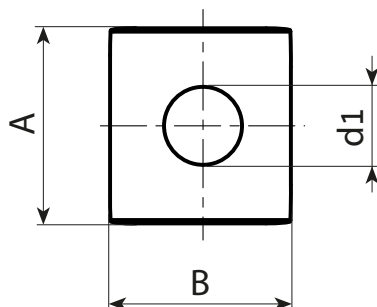
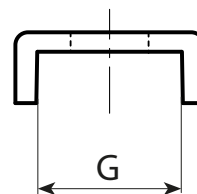
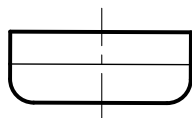
Standard blue galvanising.

Packaging:

No packaging, sold individually.

Special Requests:

- None.



Stock availability as % (🛒)
90% (●) - 40% (●) - 5% (●)

art.	A	B	G	d1	🔒
J801010.F06.5Z	17	15	12	6,5	5
J801012.F06.5Z	18	15	13	6,5	5
J801014.F08.5Z	19	18	14	8,5	7
J801018.F10.5Z	24	25	18	10,5	14