

J300

LOCKING BRACKET WITH THROUGH HOLE



Materials:

Reinforced polyamide.
Resistant to oils and greases.

Surface finish:

Satin.

Colour:

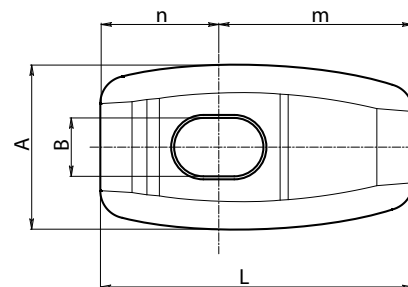
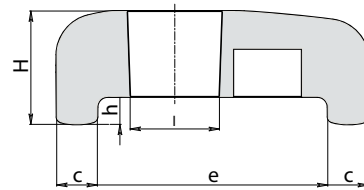
Black (RAL 9011).

Hole

Smooth through hole obtained by moulding the plastic.

Special Requests:

- None.



The use of the J300 bracket must be combined with a knob with a threaded stud. An effective combination could be the one with T-handle art. L271. Used together they function as a quick locking and release system for panels of machinery in general. Particularly suitable for insulating panels of large external air conditioning chiller units.



Stock availability as % (🛒)
90% (●) - 40% (●) - 5% (●)

Art.	A	L	H	B	I	c	e	h	n	m	g
J30046.TG08.501	24	45.5	16.5	8.5	13	6	33.5	4	17	28.5	15
J30068.TG08.501	24	67.5	16.5	8.5	13	6	55.5	4	17.5	50	19



Arbel Agencies LTD.
11 Ba'alei Hamelacha st. Qiryat Bialik P.O.B 1095, ZIP 2751311, ISRAEL
+972(0)48736969 ☎ +972(0)48730708 📠 info@arbel-ltd.com 🌐 www.arbel-ltd.com 🌐

