

J184



C10



STEEL CATCH PLATE FOR ADJUSTABLE TOGGLE LATCH

Materials:

Drilled and sheared catch plate made of steel.

Surface finish:

Glossy.

Colour:

Standard blue galvanising.

ATTENTION:

The toggle latch must be ordered separately from the catch plate.

Special Requests:

- None.

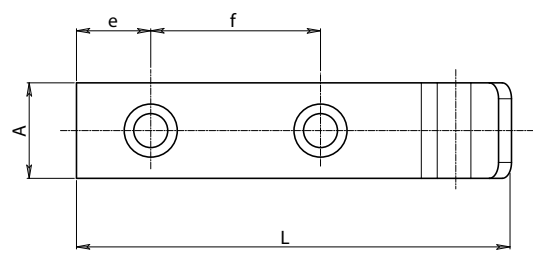
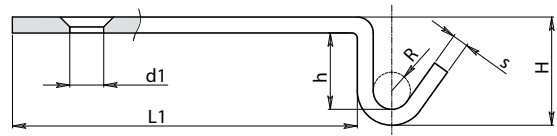
COMBINABLE CATCH PLATES:

Catch plate J184048 combinable with toggle latches:

J180048-J182048.

Catch plate J184065 combinable with toggle latches: J180065-

J182065-J180112-J182112.



Stock availability as % (🛒)
90% (●) - 40% (●) - 5% (●)

Art.	H	L	L1	h	A	e	f	R	d1	s	🛒
J184048.FZ09	9	40	29	5	16	7	14	2.5	5.1	2	7
J184065.FZ21	21	82	65	16	18	14	32	3.5	6.5	3	31



Arbel Agencies LTD.
11 Ba'alei Hamelacha st. Qiryat Bialik P.O.B 1095, ZIP 2751311, ISRAEL
+972(0)48736969 ☎ +972(0)48730708 📠 info@arbel-ltd.com 🌐 www.arbel-ltd.com 🌐

