

J130

UNIVERSAL LOCK WITH KNOB



Materials:

- (1) Die-cast zamak lock body M19 (stator), rotor and knob.
- (2) Elastic washer d. 24x1 with bore d. 19.4.
- (3) Galvanised steel hexagon lock nut M19x1.
- (4) Galvanised steel locking lever. (Qn design N flat - Qe design E bent outwards).
- (5) Conical steel elastic washer d. 12x1.5.
- (6) Galvanised steel Phillips dome head screw M5x8.

Surface finish:

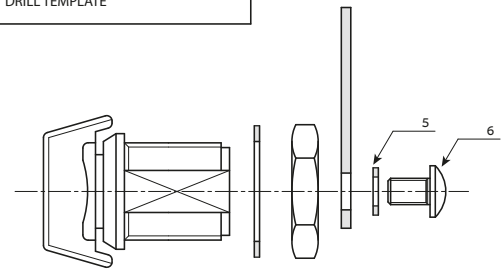
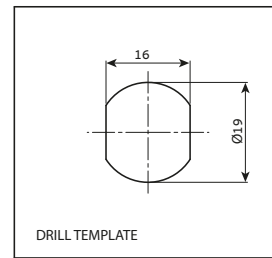
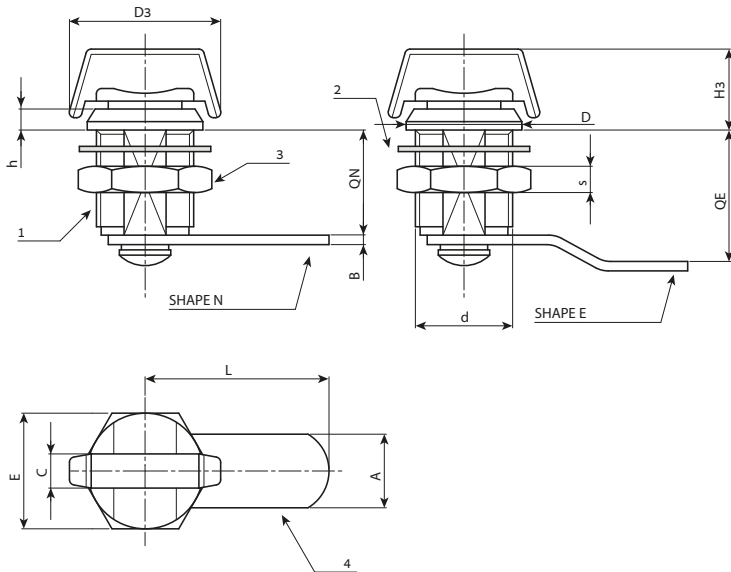
- (1) Nickel-plated.
- (2-5) Black oxide treated.
- (3-4-6) Standard blue galvanising.

Rotation:

90°.

Special Requests:

- None.



Stock availability as % (🛒)
90% (●) - 40% (●) - 5% (●)

| Art. | d | L | Qn | Qe | D | D3 | H3 | h | A | B | C | E | S | 🛒 |
|-----------------|-----|----|----|----|----|----|----|---|----|-----|-----|----|---|----|
| J130019.ZN30X20 | M19 | 30 | 20 | - | 22 | 29 | 15 | 4 | 14 | 2.5 | 6.5 | 22 | 5 | 57 |
| J130019.ZE30X25 | M19 | 30 | - | 25 | 22 | 29 | 15 | 4 | 14 | 2.5 | 6.5 | 22 | 5 | 60 |

Arbel Agencies LTD.



11 Ba'alei Hamelacha st. Qiryat Bialik P.O.B 1095, ZIP 2751311, ISRAEL
+972(0)48736969 ☎ +972(0)48730708 📠 info@arbel-ltd.com 🌐 www.arbel-ltd.com 🌐

