

# J122

**NEW**



**C10**

**UL94 HB**

**RoHS COMPLIANT**

## UNIVERSAL QUARTER TURN PLASTIC CAM LOCK WITH QUICK INSTALL AND WING PIN SOCKET KEY

### Materials:

- (1) 20mm body with deformable fixing ribs, for snap fitting in sheet metal push tabs. Reinforced polyamide PA6.6. Resistant to oils and greases.
- (2) Groove shaped for wing pin key, in reinforced PA6.6 polyamide.
- (3) Steel cam, (E=0 straight, E=2,4,6,8,10 formed out, E=-2 formed in).
- (4) Self-tapping Phillips steel fixing screw 4.2x10.

### Surface finish:

- (1-2) Satin.
- (3-4) Smooth.

### Colour:

- (1-2) Black (RAL 9011).
- (3-4) Galvanising standard.

### Key (optional):

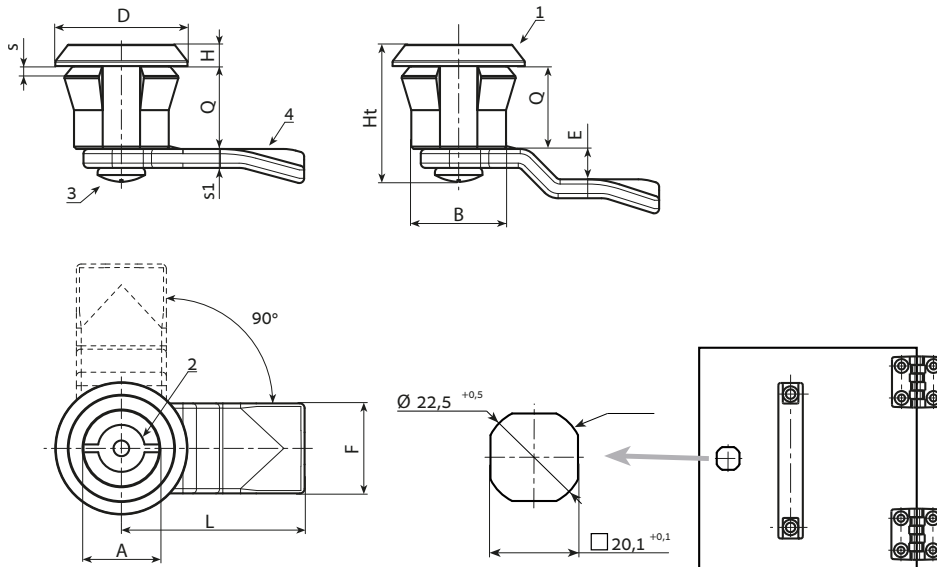
Red polyamide (PA6) key art. J090.  
ATTENTION: The key is not supplied. To be ordered separately. [page 316].

### Rotation:

90°.

### Special Requests:

- On request it is possible to have the lock complete with its key. Add the letter C at the end of the main code.
- Cams available for the locks with Q=18 and L=45:
  - E=-4 (J12220.T03E-4X4501),
  - E=-2 (J12220.T03E-2X4501),
  - E=+2 (J12220.T03E02X4501),
  - E=+4 (J12220.T03E04X4501),
  - E=+6 (J12220.T03E06X4501),
  - E=+8 (J12220.T03E08X4501),
  - E=+10 (J12220.T03E10X4501),
  - E=+12 (J12220.T03E12X4501),



Stock availability as % (🛒)  
90% (●) - 40% (●) - 5% (●)

Art.	A	B	D	L	Q	E	F	Ht	H	S(max.)	s1	Key
J12220.T03E00X4501	3	20	28	45	18	0	19	30	4	1-2	4	J090050.TP0316

Arbel Agencies LTD.



11 Ba'alei Hamelacha st. Qiryat Bialik P.O.B 1095, ZIP 2751311, ISRAEL  
+972(0)48736969 ☎ +972(0)48730708 📠 info@arbel-ltd.com 📧 www.arbel-ltd.com 🌐

