

# J121

**NEW**



**C10**

**UL94  
HB**

**RoHS  
COMPLIANT**

## UNIVERSAL QUARTER TURN PLASTIC CAM LOCK WITH QUICK INSTALL AND WITH SLOTTED HEAD

### Materials:

- (1) 20mm body with deformable fixing ribs, for snap fitting in sheet metal push tabs. Reinforced polyamide PA6.6. Resistant to oils and greases.
- (2) Groove with slotted head, in reinforced PA6.6 polyamide.
- (3) Steel cam, (E=0 straight, E=2,4,6,8,10 formed out, E=-2 formed in).
- (4) Self-tapping Phillips steel fixing screw 4.2x10.

### Surface finish:

- (1-2) Satin.
- (3-4) Smooth.

### Colour:

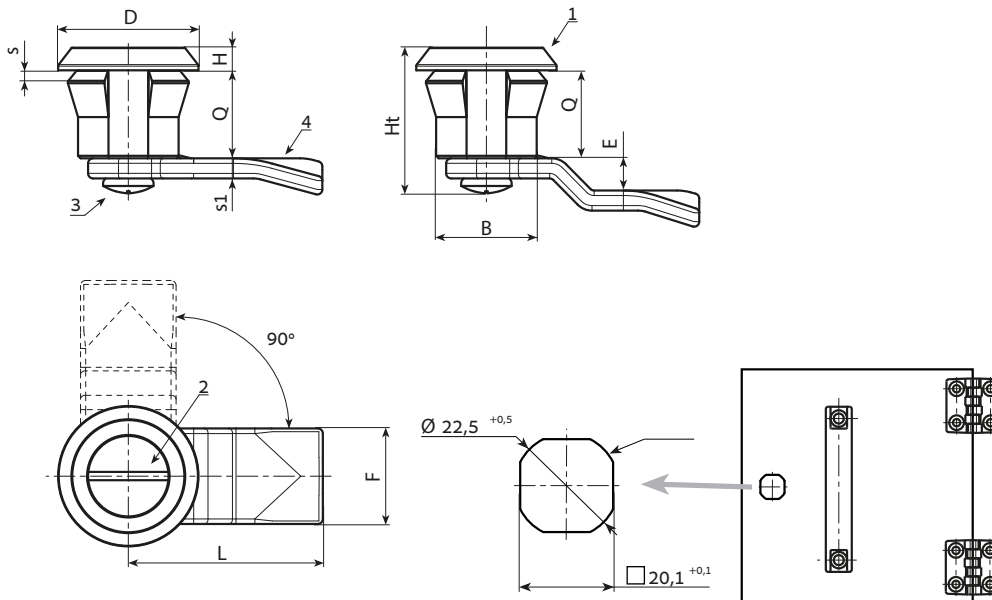
- (1-2) Black (RAL 9011).
- (3-4) Galvanising standard.

### Rotation:

90°.

### Special Requests:

- Cams available for the locks with Q=18 and L=45:
- E=-4 (J12120.T00E-4X4501),
- E=-2 (J12120.T00E-2X4501),
- E=+2 (J12120.T00E02X4501),
- E=+4 (J12120.T00E04X4501),
- E=+6 (J12120.T00E06X4501),
- E=+8 (J12120.T00E08X4501),
- E=+10 (J12120.T00E10X4501),
- E=+12 (J12120.T00E12X4501),



Stock availability as % (🛒)  
90% (●) - 40% (●) - 5% (●)

Art.	B	D	L	Q	E	F	Ht	H	S(max.)	s1	🔒
J12120.T00E00X4501	20	28	45	18	0	19	30	4	1-2	4	-

Arbel Agencies LTD.



11 Ba'alei Hamelacha st. Qiryat Bialik P.O.B 1095, ZIP 2751311, ISRAEL  
+972(0)48736969 ☎ +972(0)48730708 📠 info@arbel-ltd.com 📧 www.arbel-ltd.com 🌐

