

H765

KNURLED HOLLOW HANDWHEEL WITH THREADED THROUGH-HOLE INSERT

Materials:

Reinforced polyamide.
Resistant to oils and greases.

Surface finish:

Satin.

Colour:

Black (RAL 9011).

Inserts:

H765:

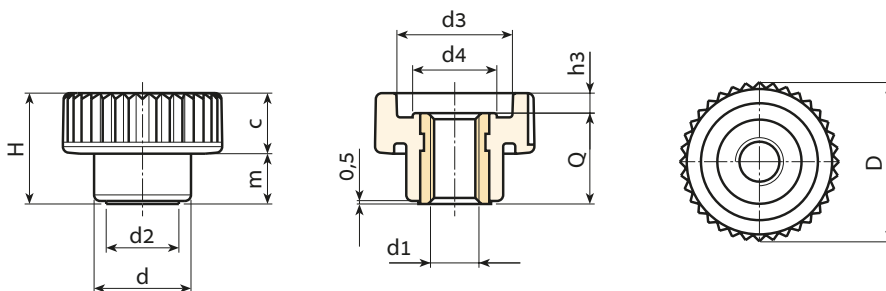
Brass insert with threaded through hole (thread tolerance 6H).

H765PIN:

Stainless steel insert with threaded through hole (Aisi 303) (thread tolerance 6H).

Special Requests:

- Upon request and for special quantities available in the colours indicated in the chart [page].



Version H765: brass insert.

Stock availability as % (🛒)
90% (●) - 40% (●) - 5% (●)

🛒	art.	D	H	d	m	c	d2	d3	d4	h3	d1 _{6H}	Q	g
●	H76515.TM0401	15	10.5	10	4.5	6	8	10	7.5	2	M4	8.5	2
●	H76515.TM0501	15	10.5	10	4.5	6	8	10	7.5	2	M5	8.5	2
●	H76521.TM0501	21	15	13	6.5	8.5	9.5	15	10.5	2.5	M5	12.5	5
●	H76521.TM0601	21	15	13	6.5	8.5	9.5	15	10.5	2.5	M6	12.5	5
●	H76526.TM0601	26	18	16	8.5	9.5	12	19	13	3	M6	15	10
●	H76526.TM0801	26	18	16	8.5	9.5	12	19	13	3	M8	15	10
●	H76533.TM0801	32	23	20	10.5	12.5	15	23	16	5	M8	18	16
●	H76533.TM1001	32	23	20	10.5	12.5	15	23	16	5	M10	18	16
●	H76540.TM0801	40	28	25	12.5	15.5	18	28	21	6	M8	22	31
●	H76540.TM1001	40	28	25	12.5	15.5	18	28	21	6	M10	22	32
●	H76540.TM1201	40	28	25	12.5	15.5	18	28	21	6	M12	22	32
●	H76540.TM1401	40	28	25	12.5	15.5	18	28	21	6	M14	22	34

Version H765PIN: stainless steel insert Aisi 303.

INOX

🛒	art.	D	H	d	m	c	d2	d3	d4	h3	d1 _{6H}	Q	g
●	H76515.TM0401PIN	15	10.5	10	4.5	6	8	10	7.5	2	M4	8.5	3
●	H76515.TM0501PIN	15	10.5	10	4.5	6	8	10	7.5	2	M5	8.5	3
●	H76521.TM0501PIN	21	15	13	6.5	8.5	9.5	15	10.5	2.5	M5	12.5	6
●	H76521.TM0601PIN	21	15	13	6.5	8.5	9.5	15	10.5	2.5	M6	12.5	6
●	H76526.TM0601PIN	26	18	16	8.5	9.5	12	19	13	3	M6	15	11.5
●	H76526.TM0801PIN	26	18	16	8.5	9.5	12	19	13	3	M8	15	11.5
●	H76533.TM0801PIN	32	23	20	10.5	12.5	15	23	16	5	M8	18	18
●	H76533.TM1001PIN	32	23	20	10.5	12.5	15	23	16	5	M10	18	18
●	H76540.TM0801PIN	40	28	25	12.5	15.5	18	28	21	6	M8	22	32
●	H76540.TM1001PIN	40	28	25	12.5	15.5	18	28	21	6	M10	22	31
●	H76540.TM1201PIN	40	28	25	12.5	15.5	18	28	21	6	M12	22	34