

H760

KNURLED HANDWHEEL WITH THREADED STUD



Materials:

Reinforced polyamide.
Resistant to oils and greases.

Surface finish:

Satin.

Colour:

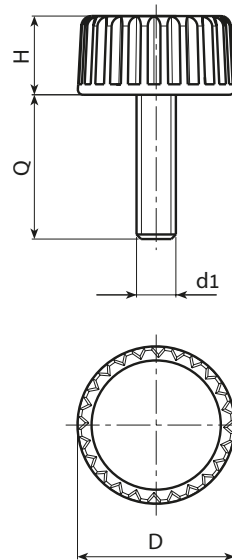
Black (RAL 9011).

Inserts:

Galvanised steel threaded stud (thread tolerance 6g).

Special Requests:

- Upon request and for special quantities inserts can be supplied with customised lengths.
- Upon request and for special quantities inserts can be supplied in different materials.
- Upon request and for special quantities available in the colours indicated in the chart [page].



Stock availability as % (🛒)
90% (●) - 40% (●) - 5% (●)

🛒	art.	D	H	LM	d16g	Q	🛒
-	H76015.TM04X..01	15	8	77	M4	13-15-19-24	2-2-2,5-3
-	H76015.TM05X..01	15	8	77	M5	15-19-24-29	4-4,5-5-5,5
-	H76015.TM06X..01	15	8	77	M6	15-19-24-29	5,5-6,5-7-7,5

Enter the selected stud length in place of the two dots . . in the item code. Customised stud length available for a minimum of 250 pieces.

LM = maximum mouldable length.



Arbel Agencies LTD.

11 Ba'alei Hamelacha st. Qiryat Bialik P.O.B 1095, ZIP 2751311, ISRAEL
+972(0)48736969 ☎ +972(0)48730708 📠 info@arbel-ltd.com 🌐 www.arbel-ltd.com 🌐

