

H759

KNURLED HANDWHEEL WITH HUB AND THREADED STUD



Materials:

Reinforced polyamide.
Resistant to oils and greases.

Surface finish:

Satin.

Colour:

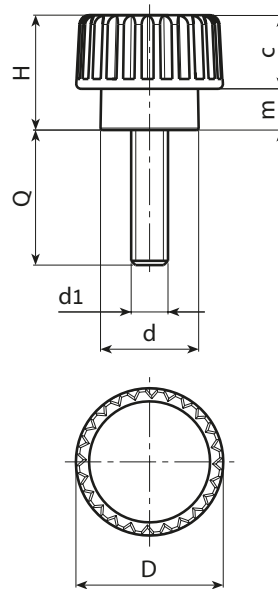
Black (RAL 9011).

Inserts:

Galvanised steel threaded stud (thread tolerance 6g).

Special Requests:

- Upon request and for special quantities inserts can be supplied with customised lengths.
- Upon request and for special quantities inserts can be supplied in different materials.
- Upon request and for special quantities available in the colours indicated in the chart [page].



Stock availability as % (🛒)
90% (●) - 40% (●) - 5% (●)

🛒	art.	D	H	d	m	c	LM	d16g	Q	🛒
-	H75915.TM03X..01	15	12	10	4.5	7.5	70	M3	11-24	3-3,5
-	H75915.TM04X..01	15	12	10	4.5	7.5	70	M4	10-20-30	3,5-4-4,5
-	H75915.TM05X..01	15	12	10	4.5	7.5	70	M5	10-16-20-30	4-4,5-5,5-6,5
-	H75915.TM06X..01	15	12	10	4.5	7.5	70	M6	10-16-20	5-6-7,5

Enter the selected stud length in place of the two dots . . in the item code. Customised stud length available for a minimum of 250 pieces.
LM = maximum mouldable length.